

Sewing Pattern: Sleeveless T-Shirt

Code: SP509

Sizes: 2XS-3XL

Fabric Suggestions

It is recommended to use comfortable woven fabrics that are light or medium weight. Fabrics such as T-shirt fabric, cotton, linen, viscose, crepe or rayon.


Fabric Requirements For All Sizes

You will need 1.5 meters / 1.6 yards of fabric.

Measurements Table

Choose the size you want to sew based on the body measurements.

All bodies of women vary in size and the table below is a general guideline made to fit most.

	2XS	XS	S	S/M	M	M/L	L	XL	2XL	3XL
	EU 34 UK 6 US 2 AU/NZ 6 IT 38 JP 7	EU 36 UK 8 US 4 AU/NZ 8 IT 40 JP 9	EU 38 UK 10 US 6 AU/NZ 10 IT 42 JP 11	EU 40 UK 12 US 8 AU/NZ 12 IT 44 JP 13	EU 42 UK 14 US 10 AU/NZ 14 IT 46 JP 15	EU 44 UK 16 US 12 AU/NZ 16 IT 48 JP 17	EU 46 UK 18 US 14 AU/NZ 18 IT 50 JP 19	EU 48 UK 20 US 16 AU/NZ 20 IT 52 JP 21	EU 50 UK 22 US 18 AU/NZ 22 IT 54 JP 23	EU 52 UK 24 US 20 AU/NZ 24 IT 56 JP 25
BUST	80 cm (31.5")	84 cm (33")	88 cm (34.6")	92 cm (36.2")	96 cm (37.7")	100 cm (39.3")	104 cm (40.9")	108 cm (42.5")	112 cm (44")	116 cm (45.6")
WAIST	60 cm (23.6")	63 cm (24.8")	66 cm (25.9")	70 cm (27.5")	75 cm (29.5")	80 cm (31.4")	85 cm (33.4")	90 cm (35.4")	95 cm (37.4")	100 cm (39.3")
HIPS	88 cm (34")	92 cm (36.2")	96 cm (37.7")	100 cm (39.3")	104 cm (40.9")	108 cm (42.5")	112 cm (44")	116 cm (45.6")	120 cm (47.2")	124 cm (48.8")

Terms of Use

This pattern is protected by copyright. Copying and redistributing of this file in digital or printed form are forbidden. Selling of items made from this pattern is allowed for small businesses

Printing Instructions

Please use free Adobe Acrobat Reader to open and print patterns.

Printer Settings for A4 or US Letter Formats

Page (Document) Size: A4 (210 x 297 mm) or Letter (8.5" x 11")

Page Orientation: Portrait

Scale: Actual Size / 100% Scale (make sure you don't scale or fit to page!)

Document Size:

A4 (210 x 297 mm) ▾

Document Size:

Letter (8.5" x 11") ▾

or

Orientation:

Portrait ▾

Orientation:

Portrait ▾

Page Sizing & Handling ⓘ

Size

Poster

Multiple

Booklet

Fit

Actual size

Shrink oversized pages

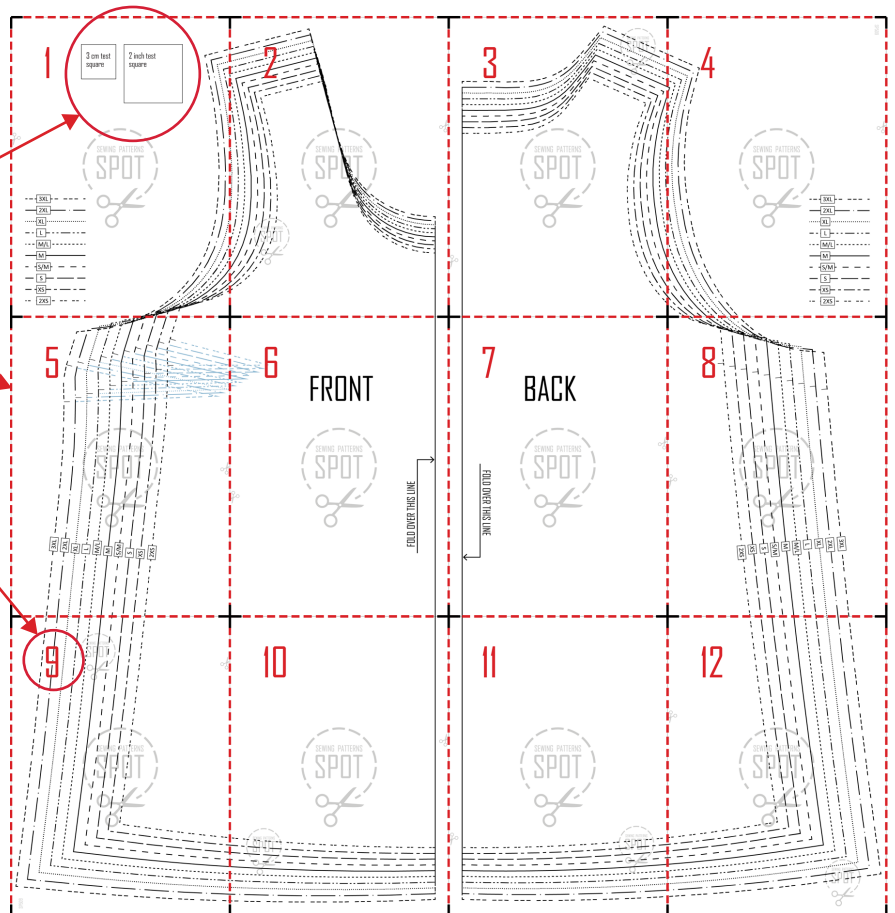
Custom Scale: 100 %

Pattern Use Guide

1. Check 3 cm or 2 inch test squares on the first page to verify your print.

2. Cut printed images by dashed line (shown as red dashed lines here)

3. Merge pages by number as shown on the image.





3 cm test square

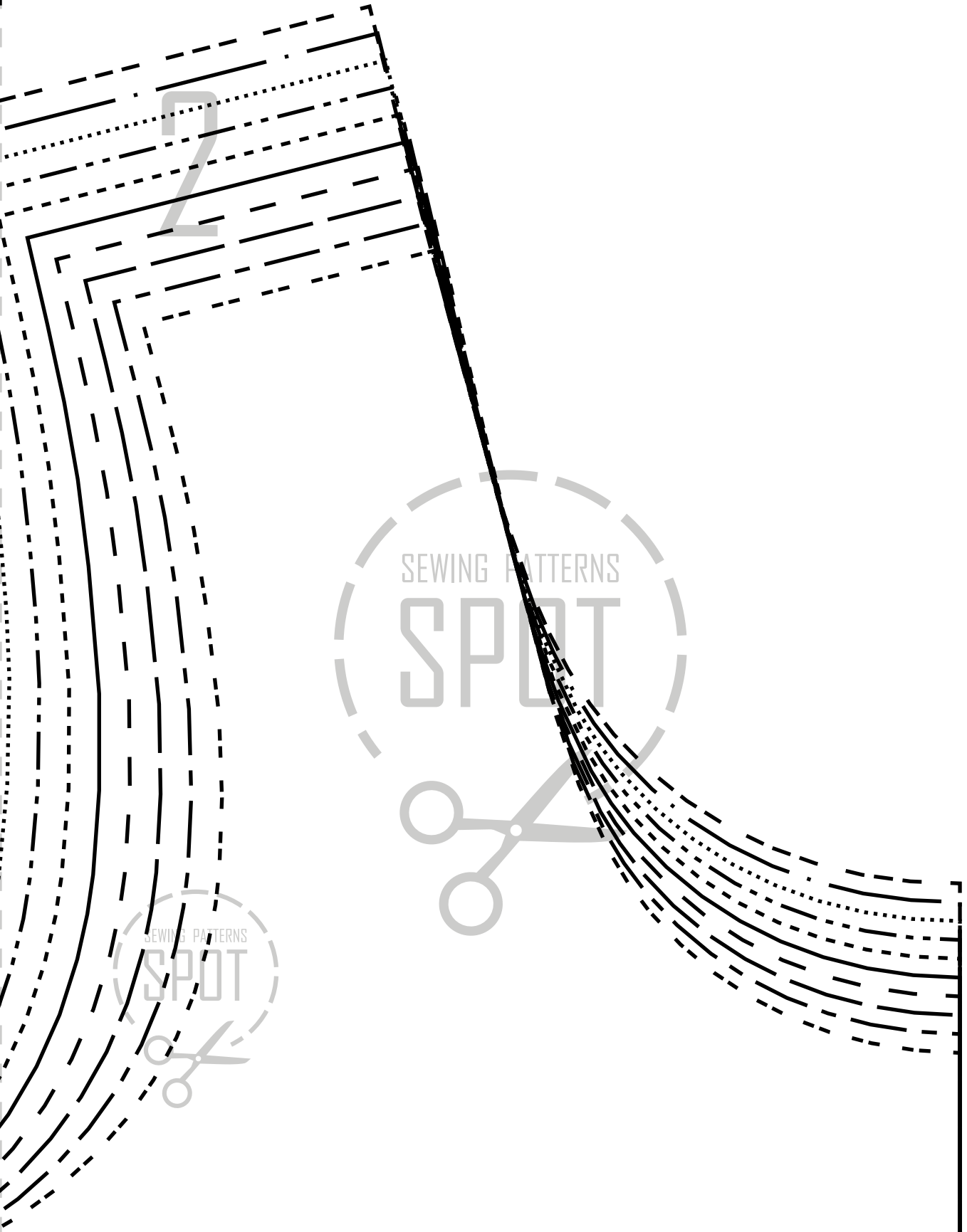
2 inch test square



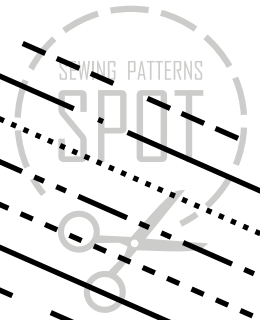
- 3XL ---
- 2XL —
- XL
- - - L - - -
- · - M/L - · -
- M —
- - S/M - - -
- S —
- - XS - - -
- · 2XS · - -



2

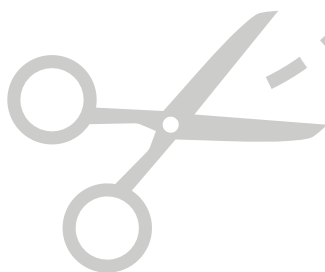


3



4

SEWING PATTERNS
SPOT



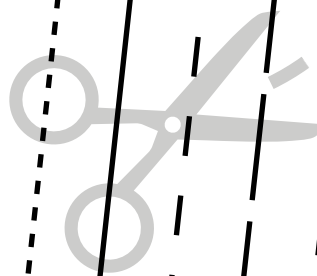
- 3XL ---
- 2XL —
- XL
- L ---
- M/L ---
- M —
- S/M ---
- S ---
- XS ---
- 2XS ---

55

- 3XL
- 2XL
- XL
- L
- M/L
- M
- S/M
- S
- XS
- 2XS

SEWING PATTERNS

SPOT

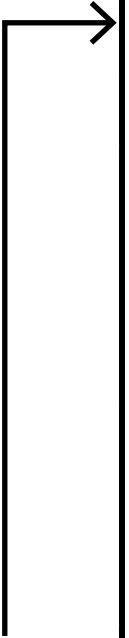


6

FRONT



FOLD OVER THIS LINE



7

BACK

FOLD OVER THIS LINE

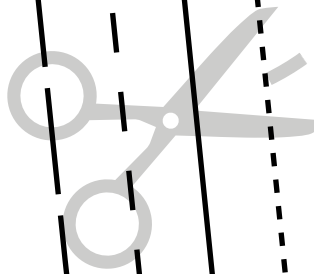




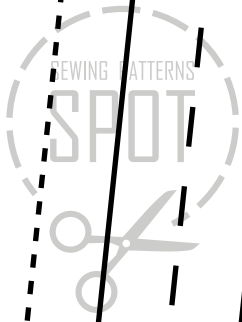
2XS XS S S/M M M/L L XL 2XL 3XL

SEWING PATTERNS

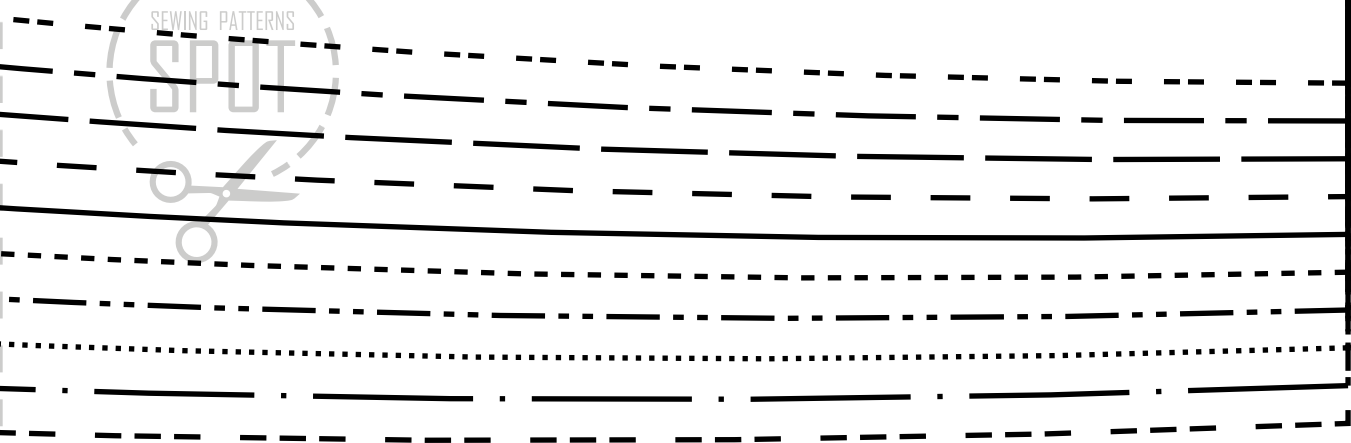
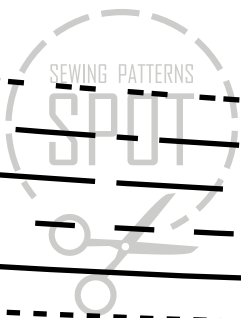
SPOT



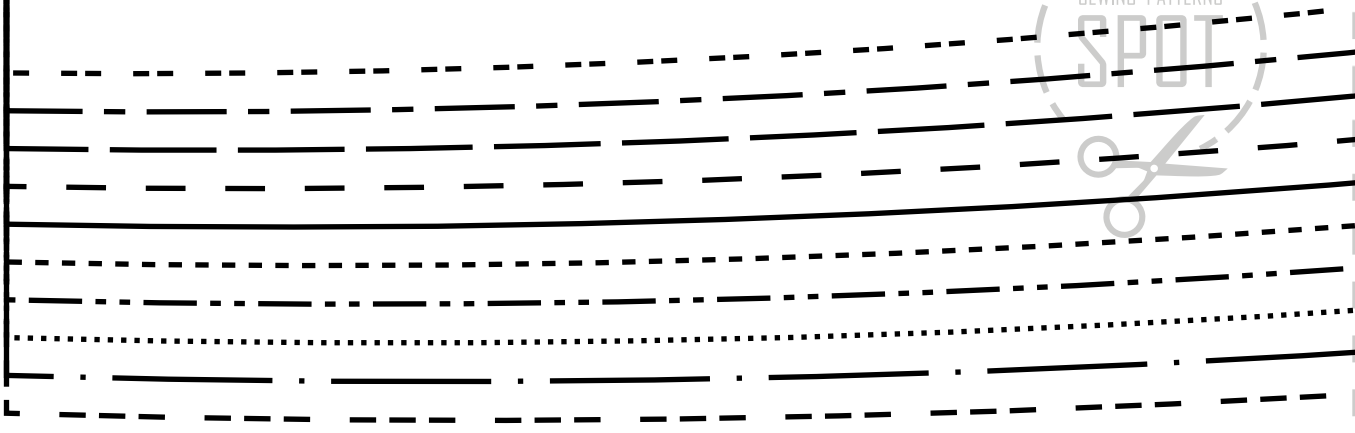
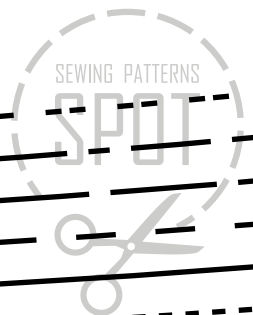
99



10



11



12

