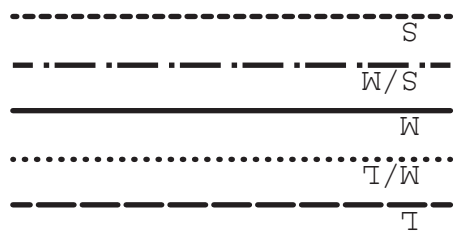


Hem allowance
3 cm (1 1/4")

A1



SIZE KEY

A1

Back
Cut 2x fabric

A2

Grainline

A1

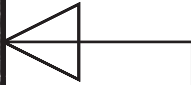
A2

unfettered
—unfettered patterns—

patterns.wordpress.com
Model #UP1027
Sizes S-L

Front
Cut 1x fabric

Cut this edge
on the fold of the fabric



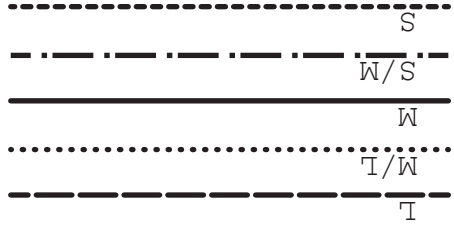
A3

A3

A2

unfetter

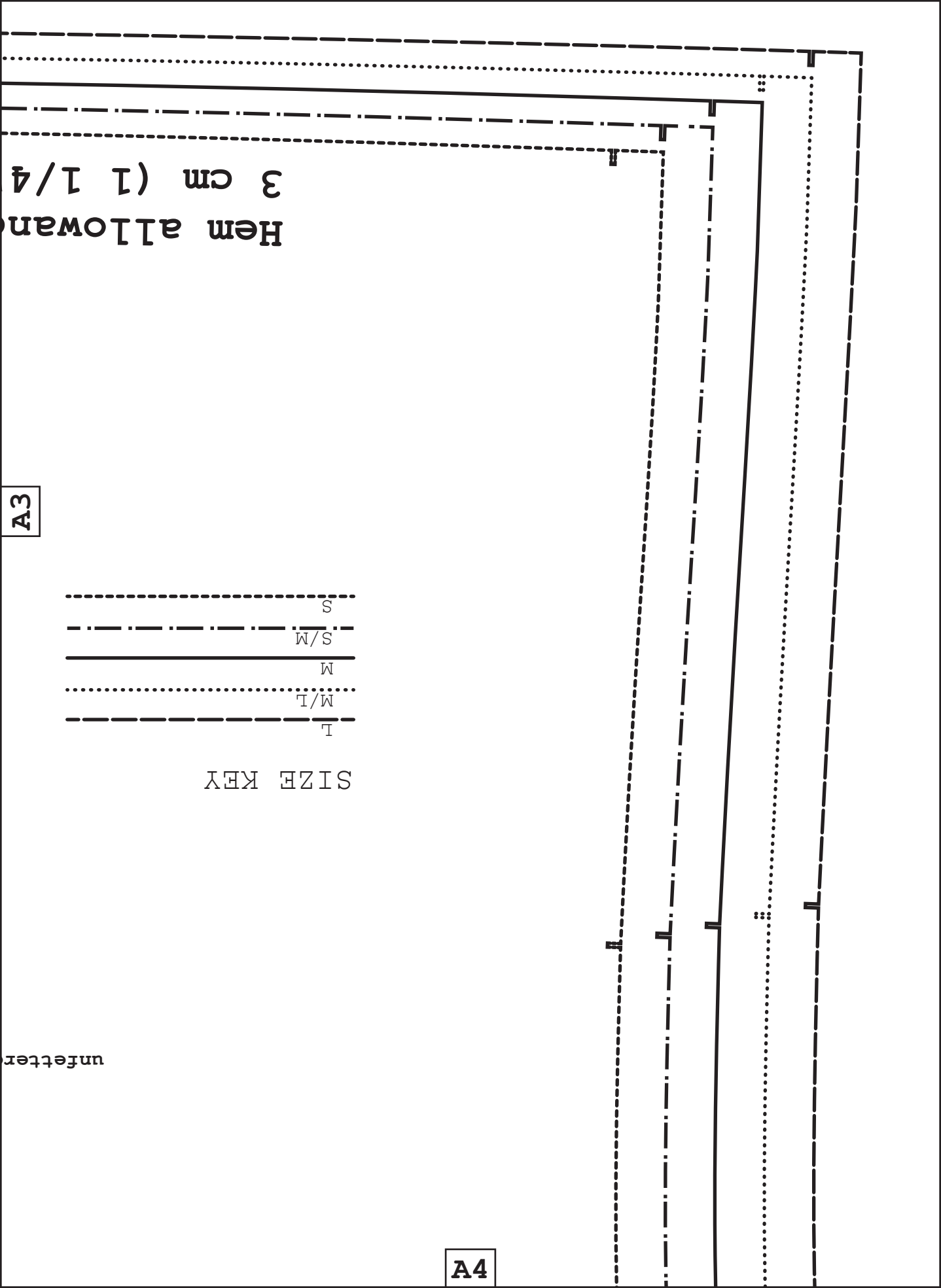
SIZE KEY



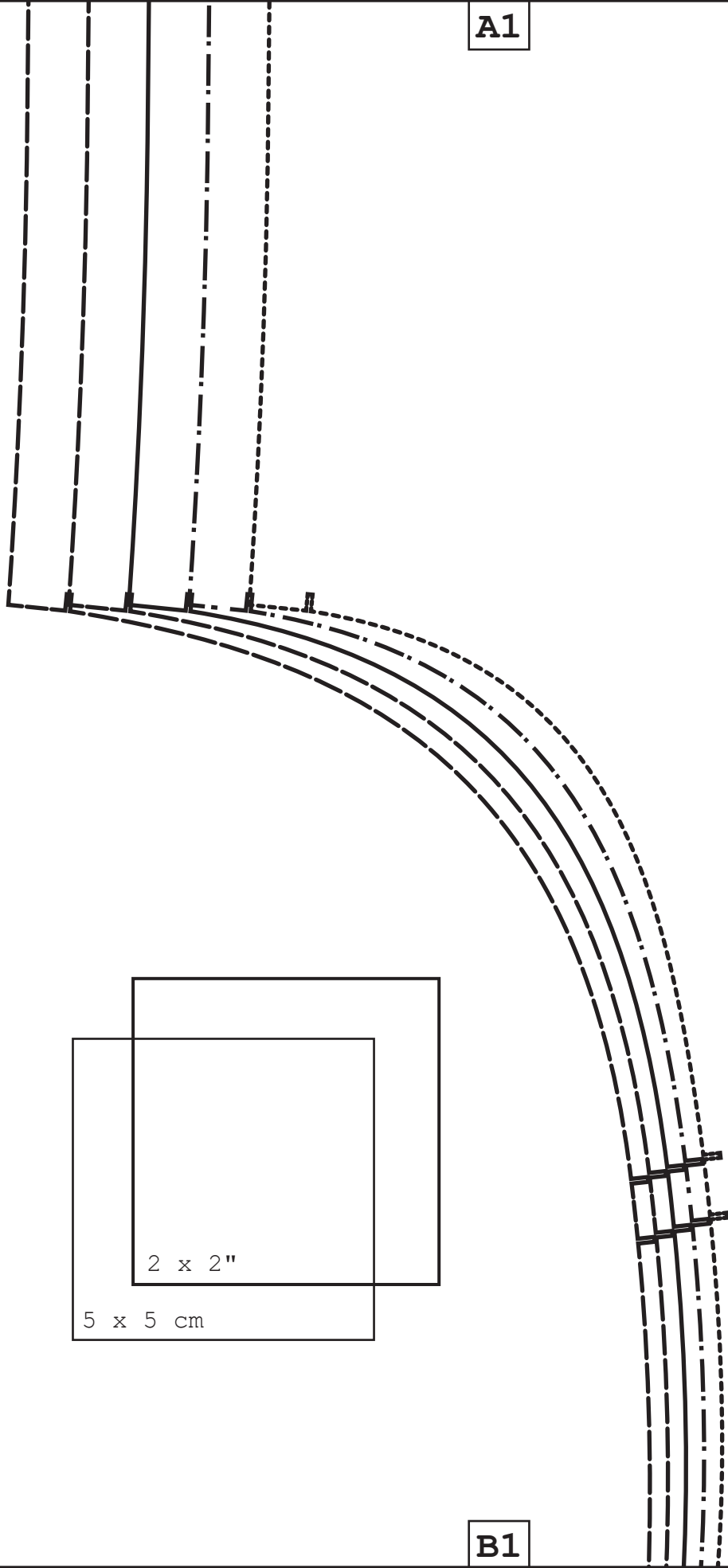
A3

Hem allowance
3 cm (1 1/4

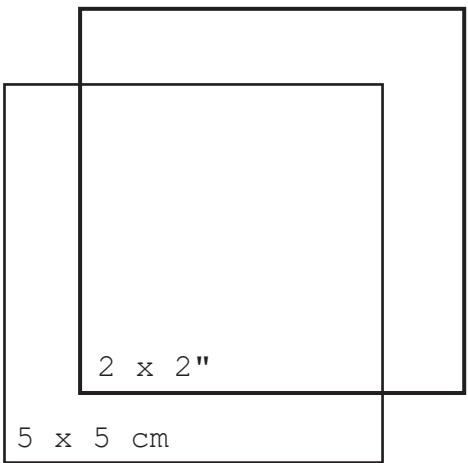
A4



A1



B1



B1

unfetteredpa
Model #UP102
Sizes S-L

unfettered
-unfettered

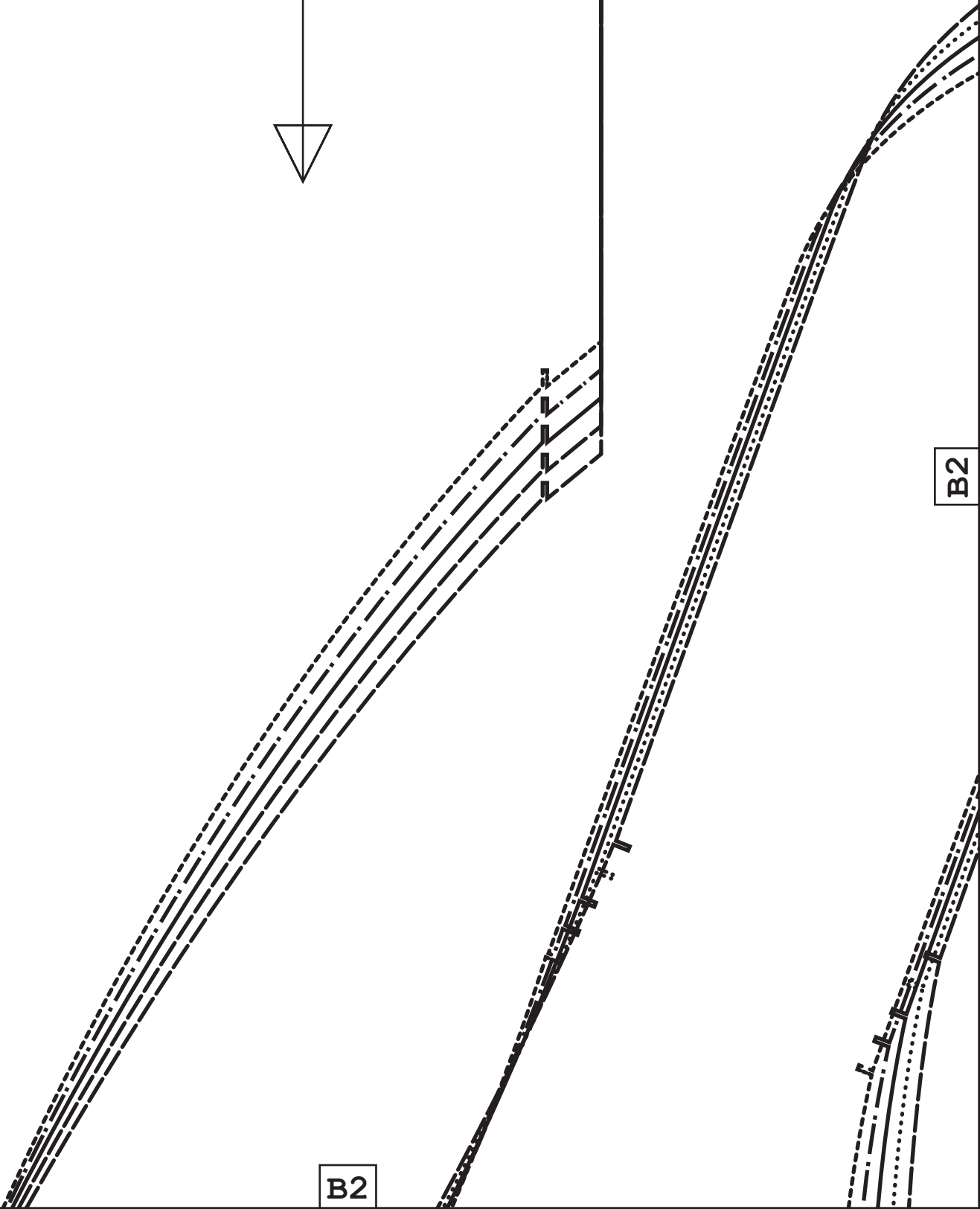
A2

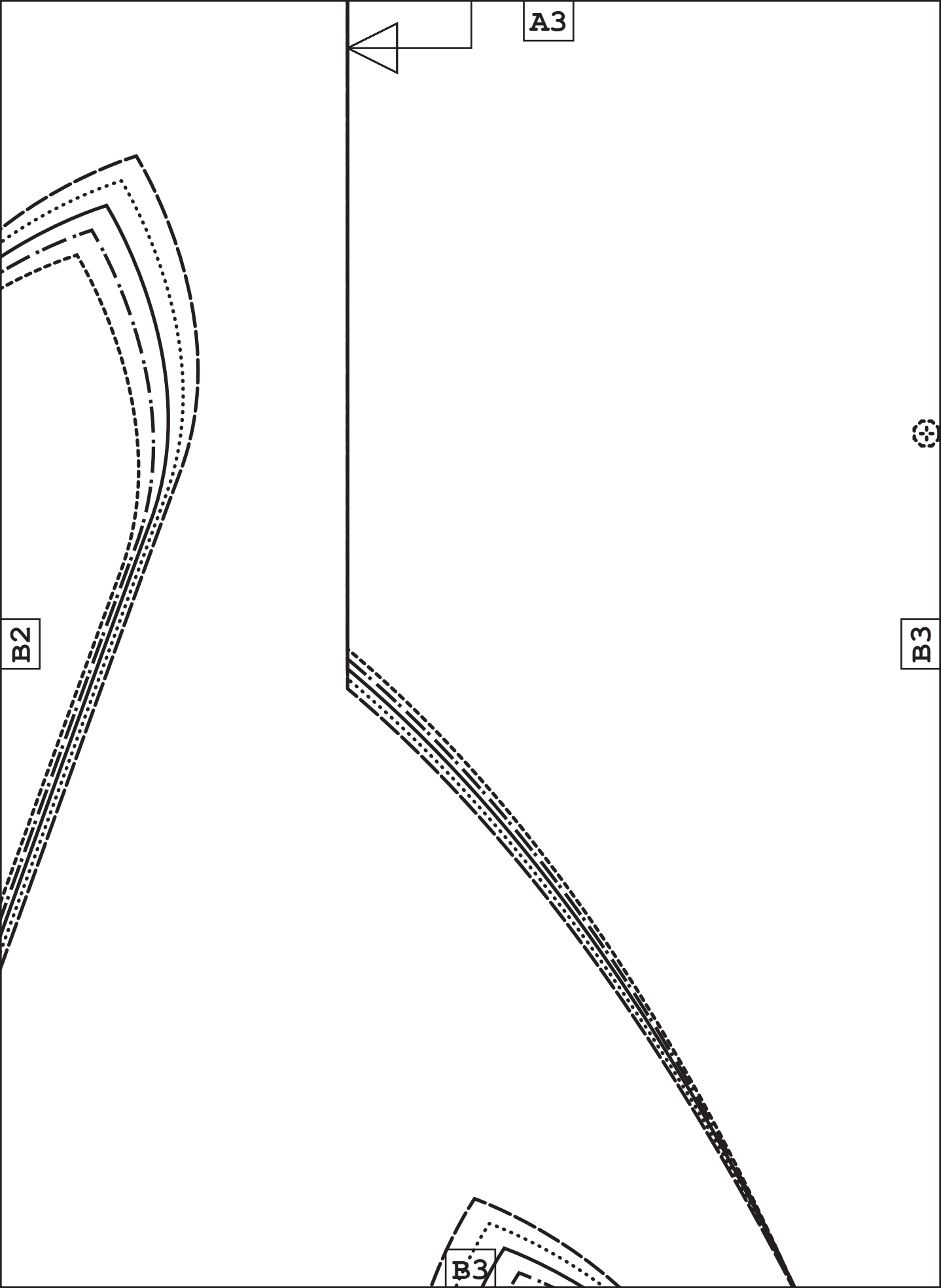


B1

B2

B2





A3

B2

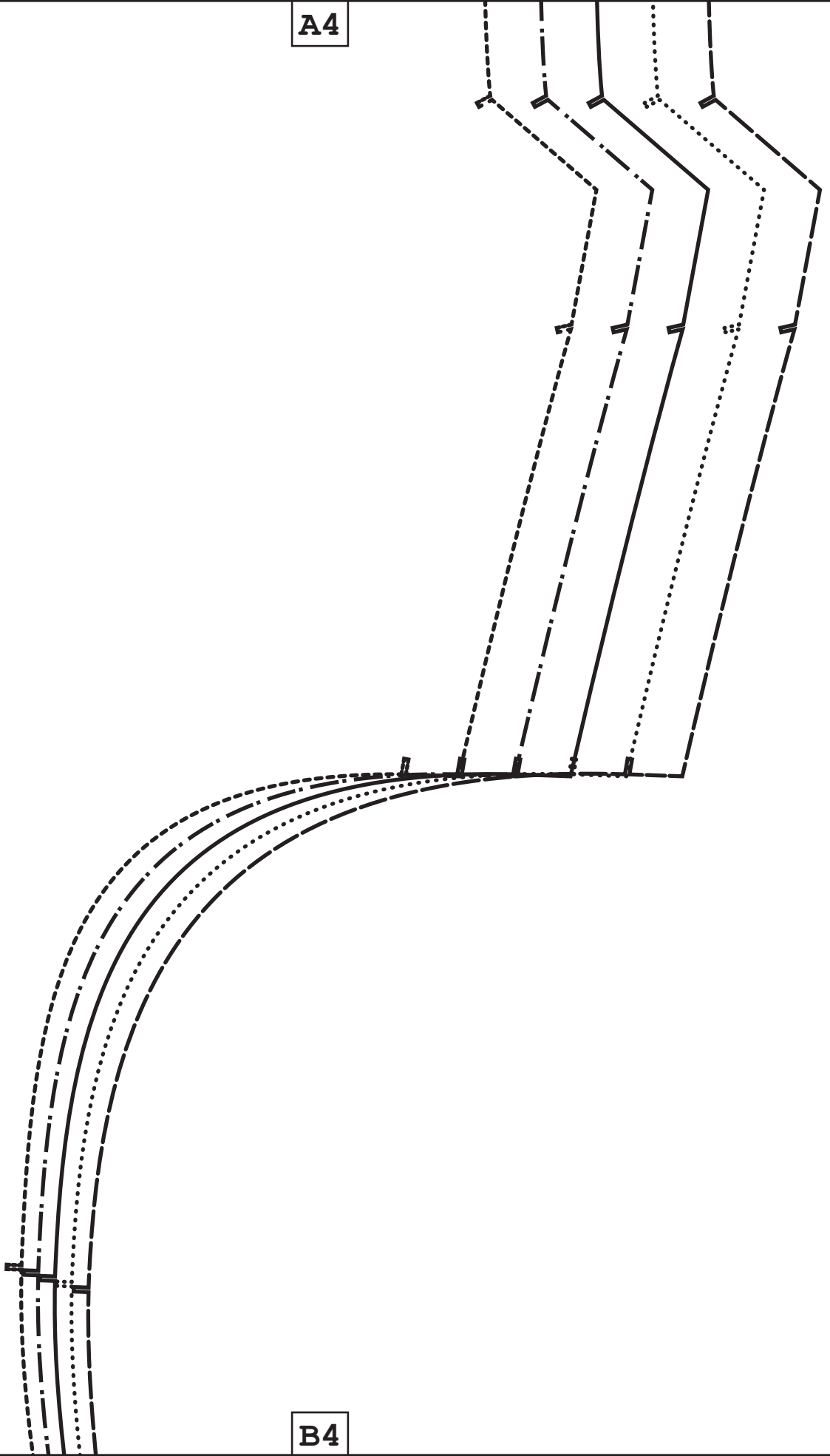
B3

B3

A4

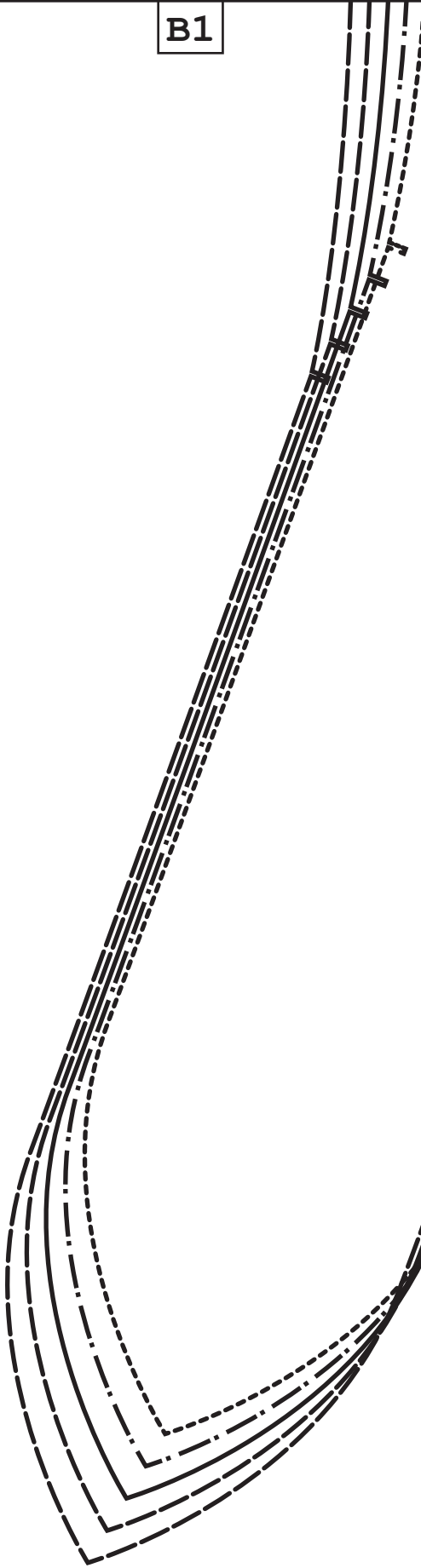


B3



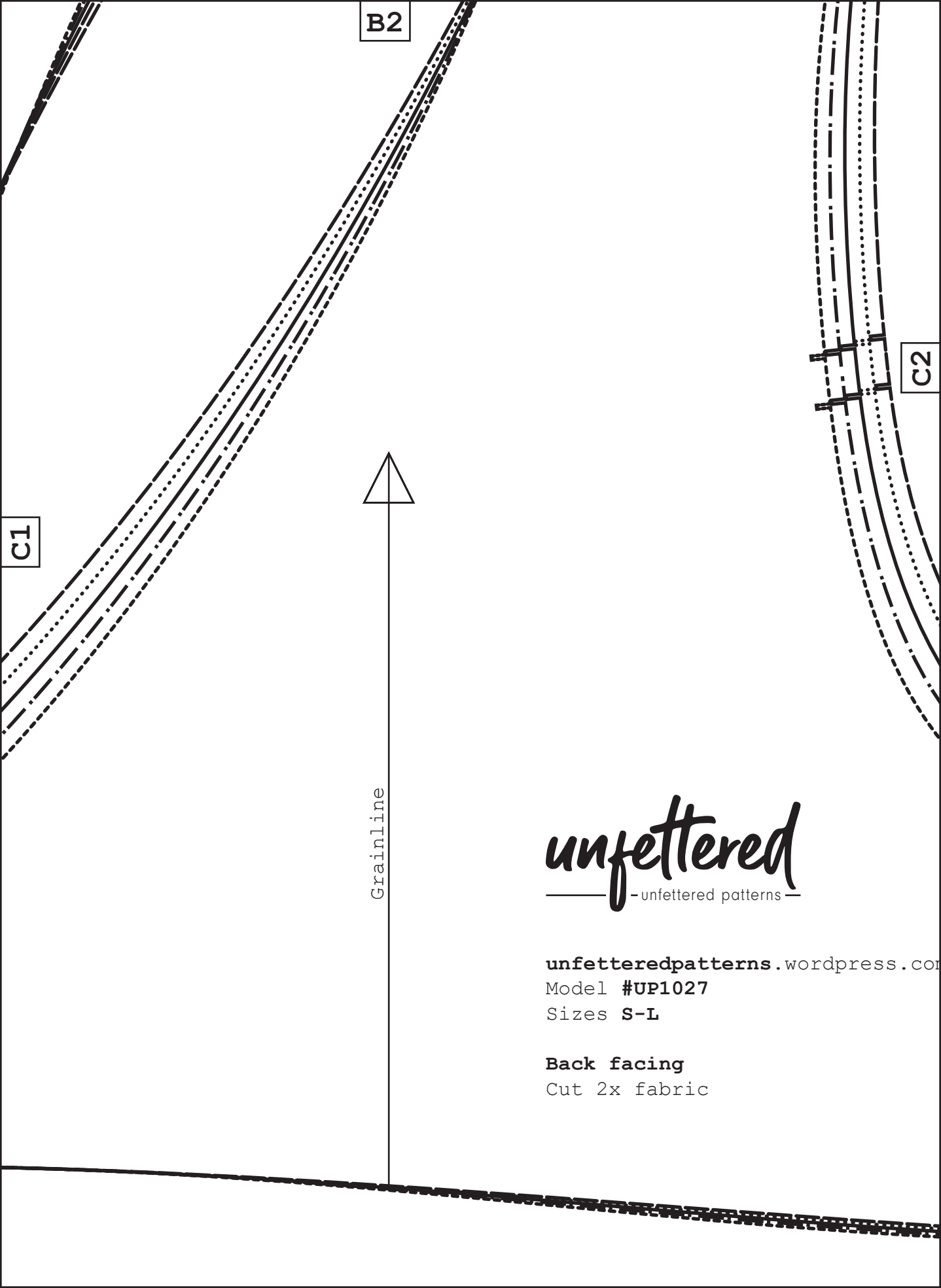
B4

B1



C1





B2

C1

C2



Grainline

unfettered
— unfettered patterns —

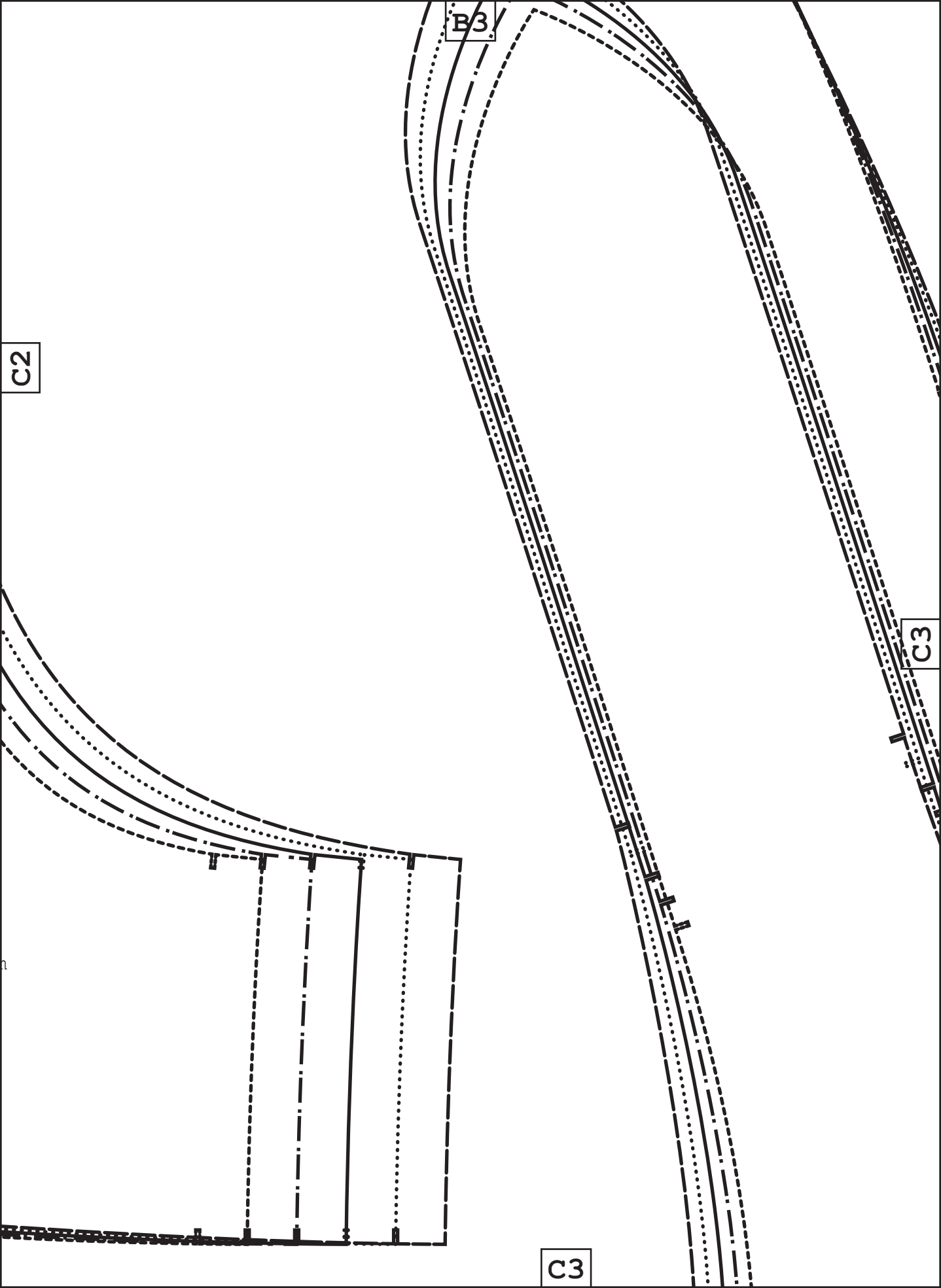
unfetteredpatterns.wordpress.com

Model #UP1027

Sizes S-L

Back facing

Cut 2x fabric



C2

B3

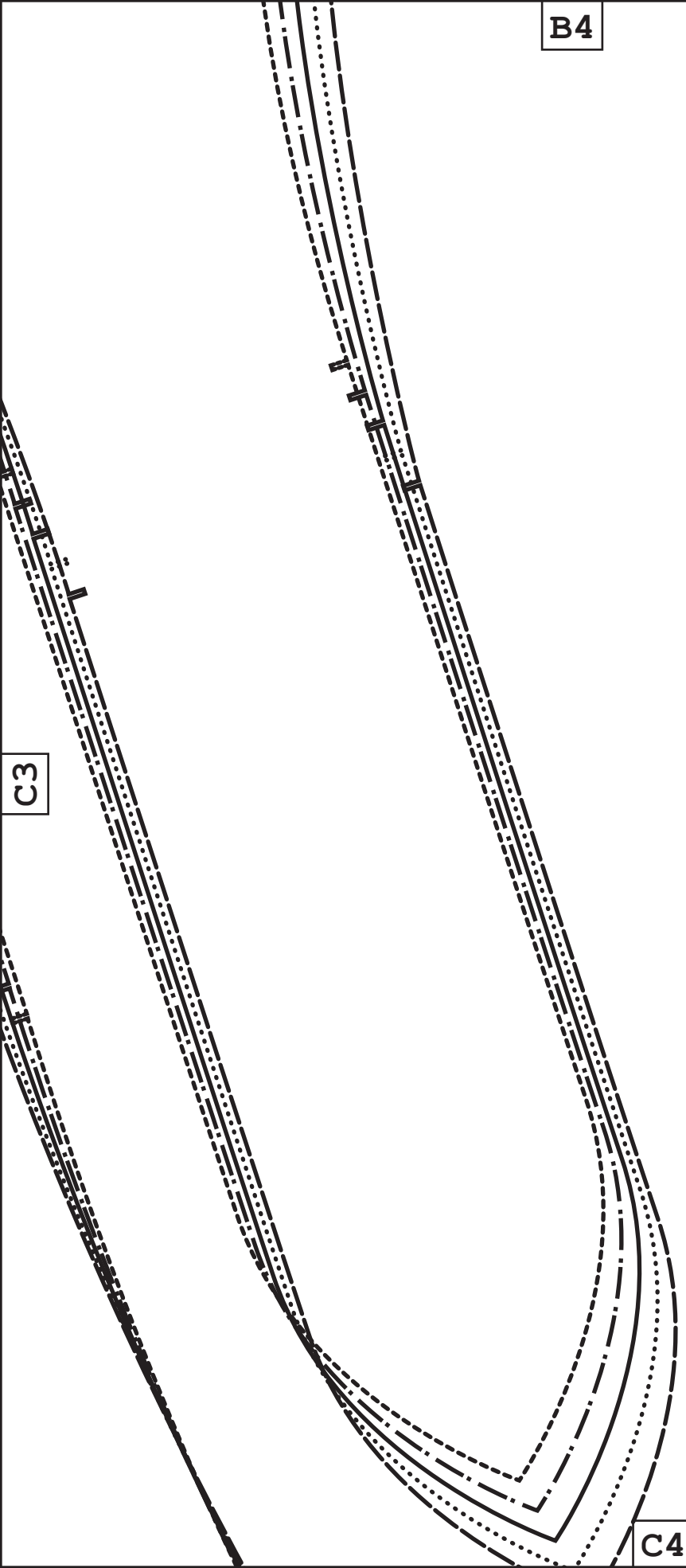
C3

C3

B4

C3

C4

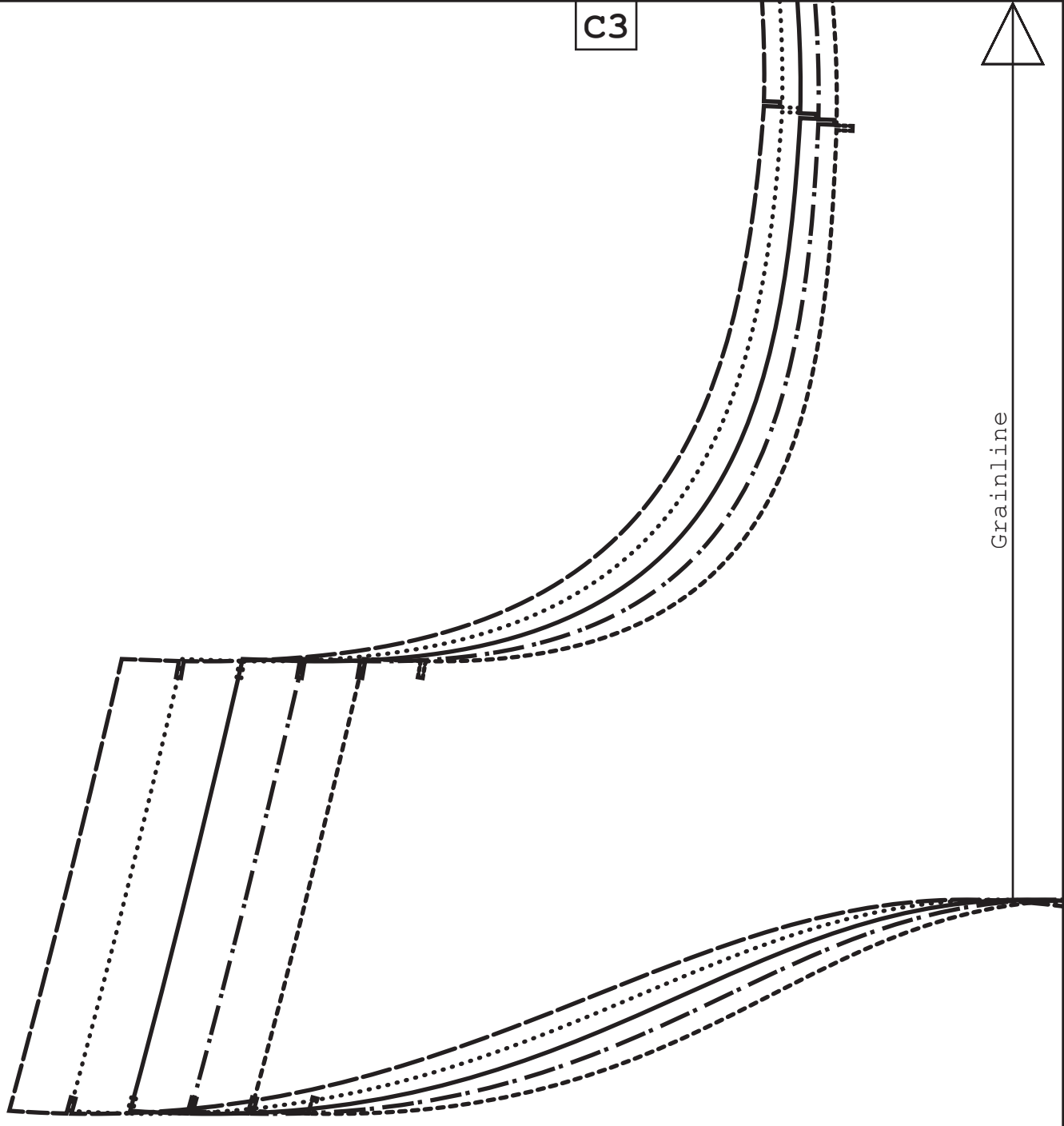


C3



Grainline

D3



C4

unfettered
— unfettered patterns —

unfetteredpatterns.wordpress.com

Model #UP1027

Sizes S-L

Front facing

Cut 2x fabric

D3

