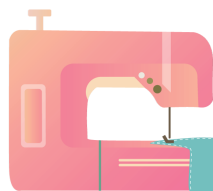


3

ESTOS PATRONES NO INCLUYEN
MARGEN DE COSTURA

Comprueba las medidas de este cuadro
para comprobar que los patrones están
impresos en la medida correcta.

Este cuadro mide 5 cm x 5 cm
(2 inches x 2 inches)



Oh! Mother Mine!!

COSTURA & DIY

D

Para Victoria Diaz



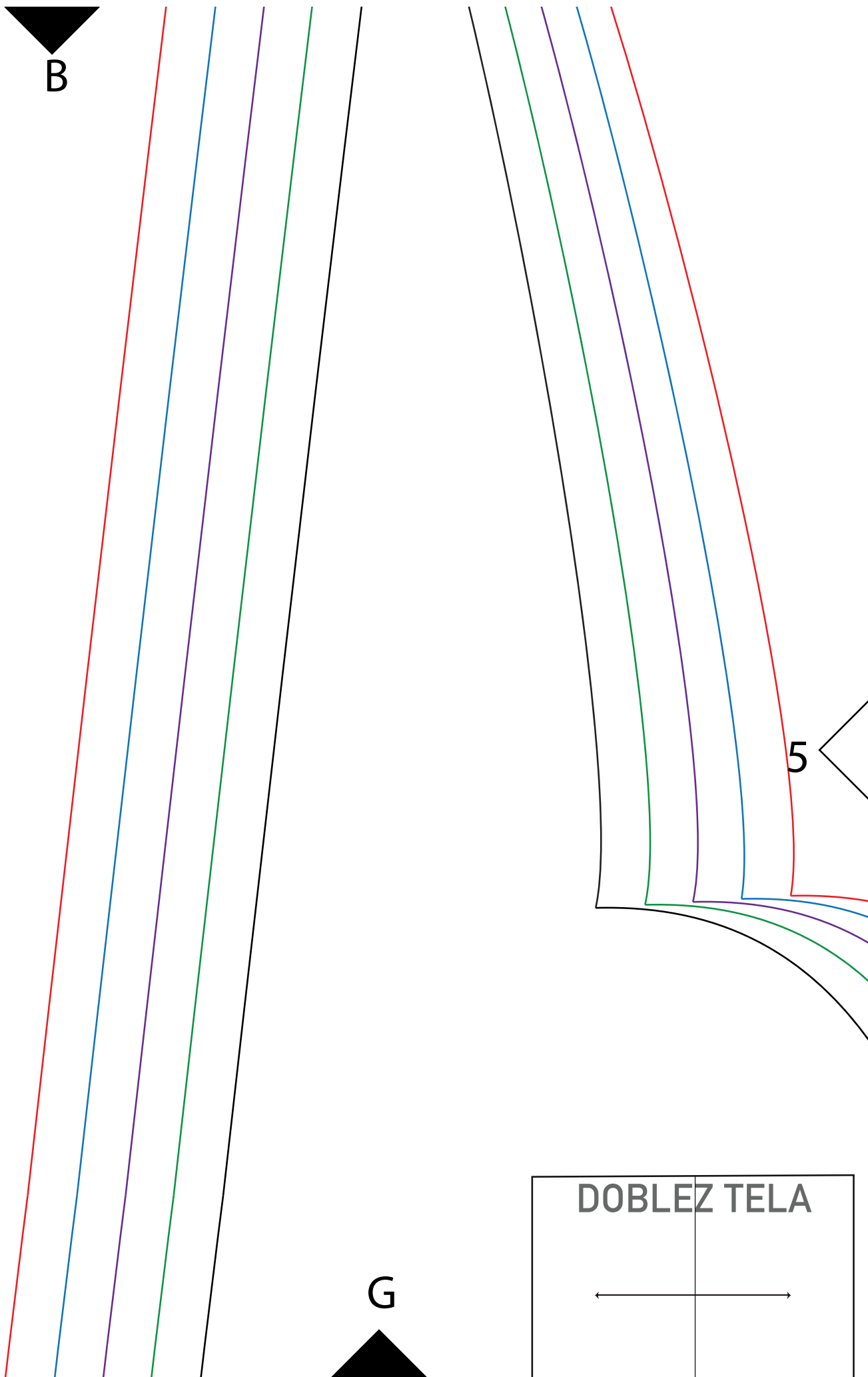
A

4



F





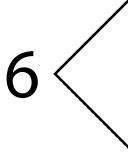


C

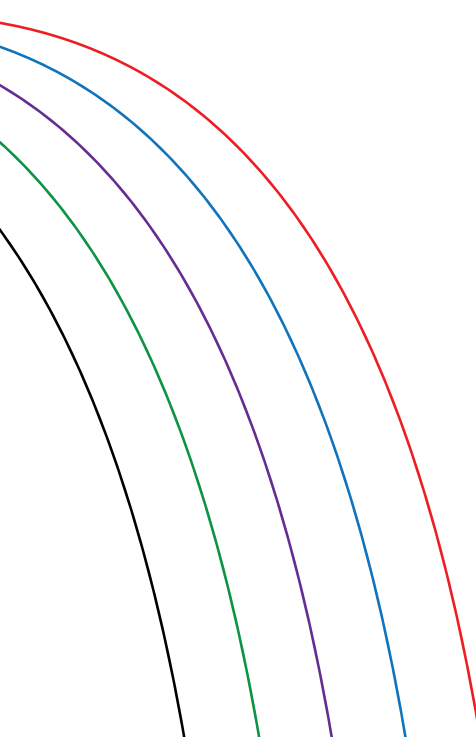
CORTA X 2



5



6



Vestido cruzado mostaza
MODELO 46
DELANTERO



www.ohmotherminediary.com

 @ohmotherminediary

H



www.ohmothermindediy.com

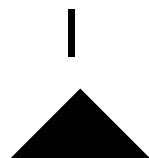
 @ohmothermindediy

6

a mujer

om
y

Coser cinturón
en ambos patrones
delanteros



-A - CENTRO ESPALDA



J



F

7

una uno de
stados para
ón

Abert
los co
cintur

7

Talla 36

Talla 38

Talla 40

Talla 42

Talla 44

K

G



CORTA X 2

www.ohmotherminediary.com

 @ohmotherminediary

8

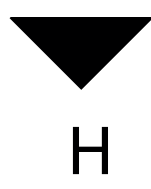
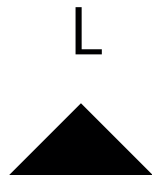
Talla 44

Talla 42

Talla 40

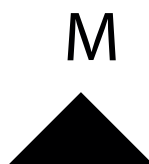
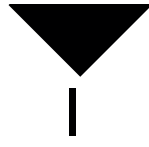
Talla 38

Talla 36

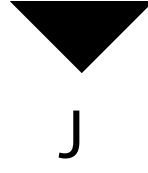


9

9



DOBLEZTEI



Vestido cruzado mostaza mujer
MODELO 46
ESPALDA



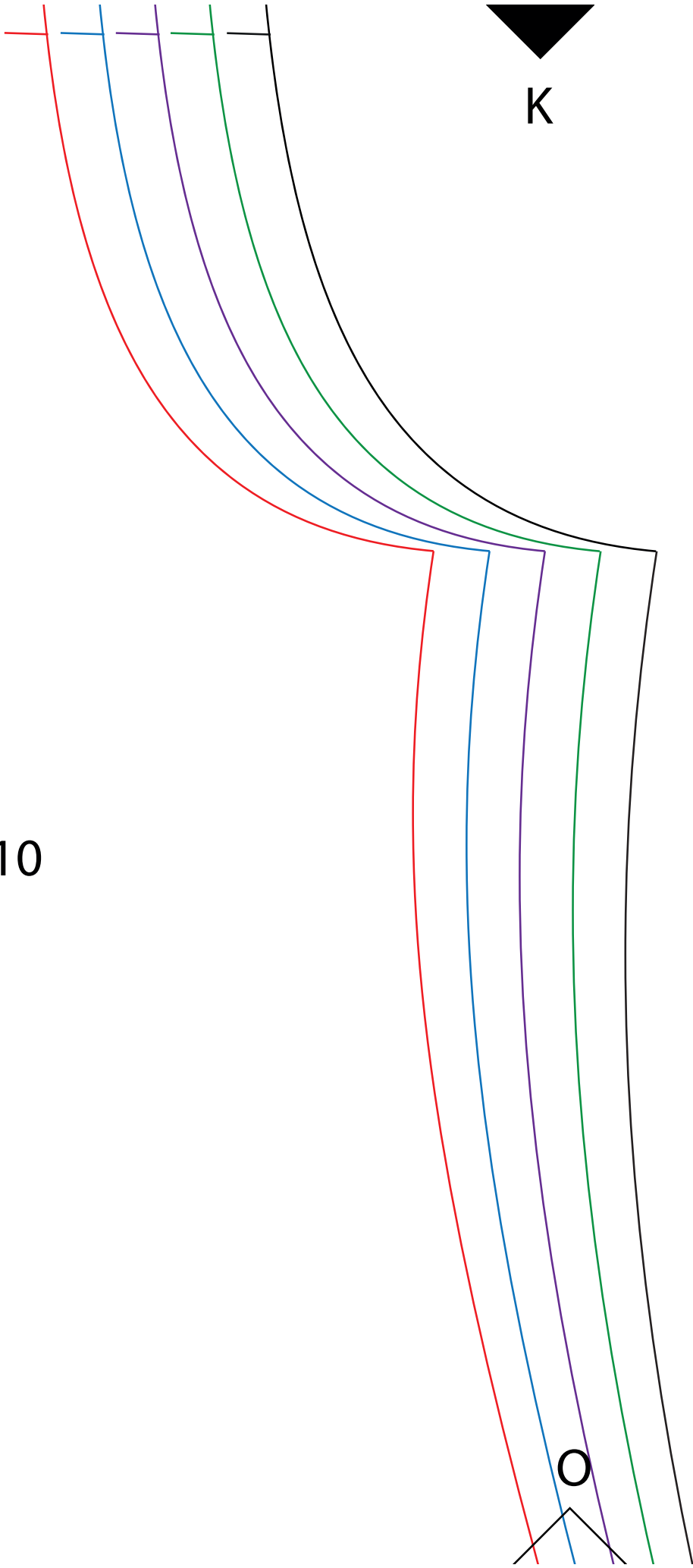
www.ohmotherinediy.com
@ohmotherinediy

10

N



10



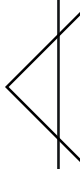
Vestido cruzado mostaza mujer

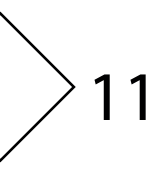
MODELO 46

CINTURÓN

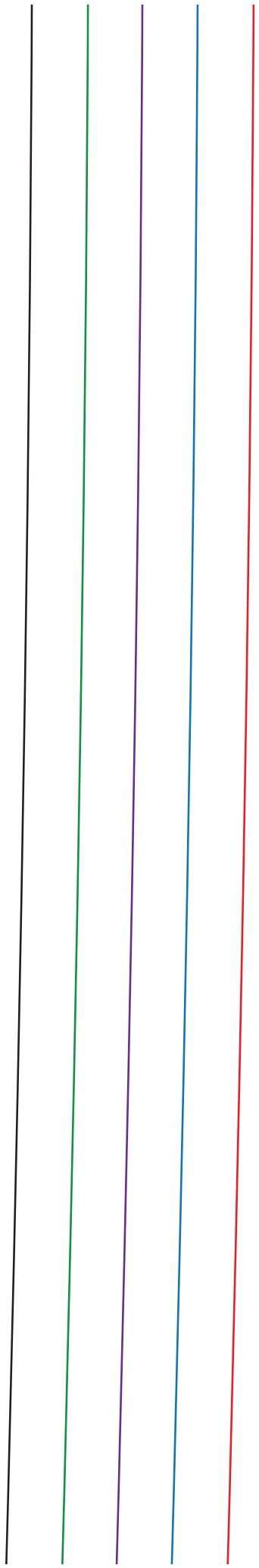
Doblar por aquí

11



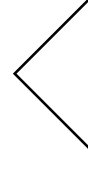


11



L

12

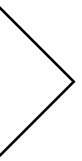


P





M



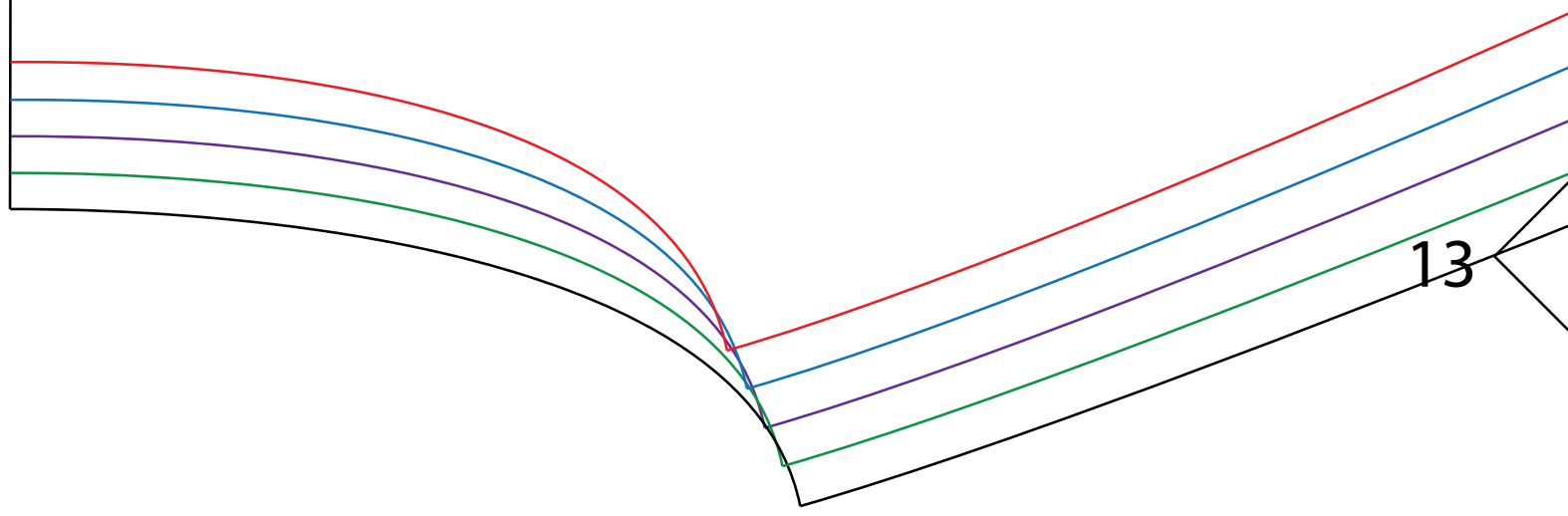
12

Q

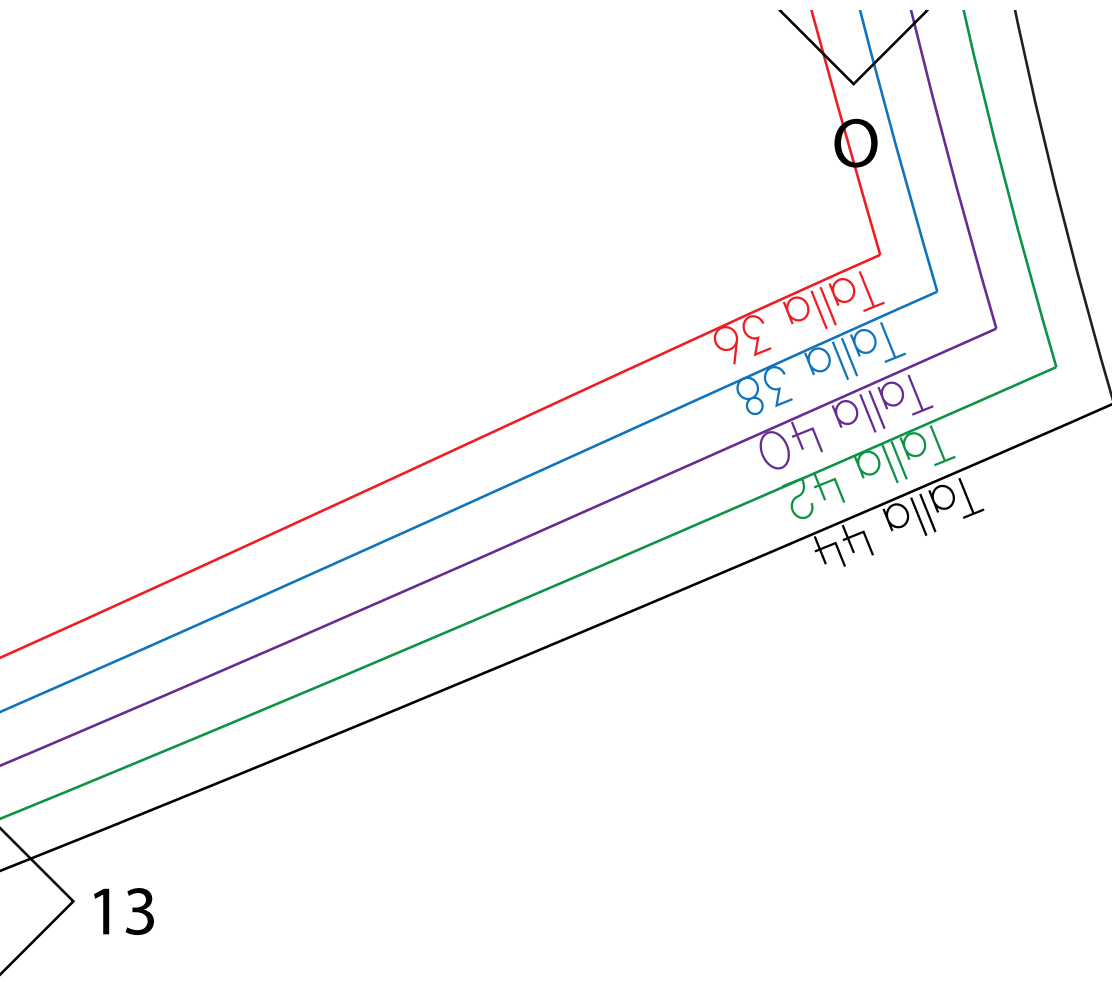




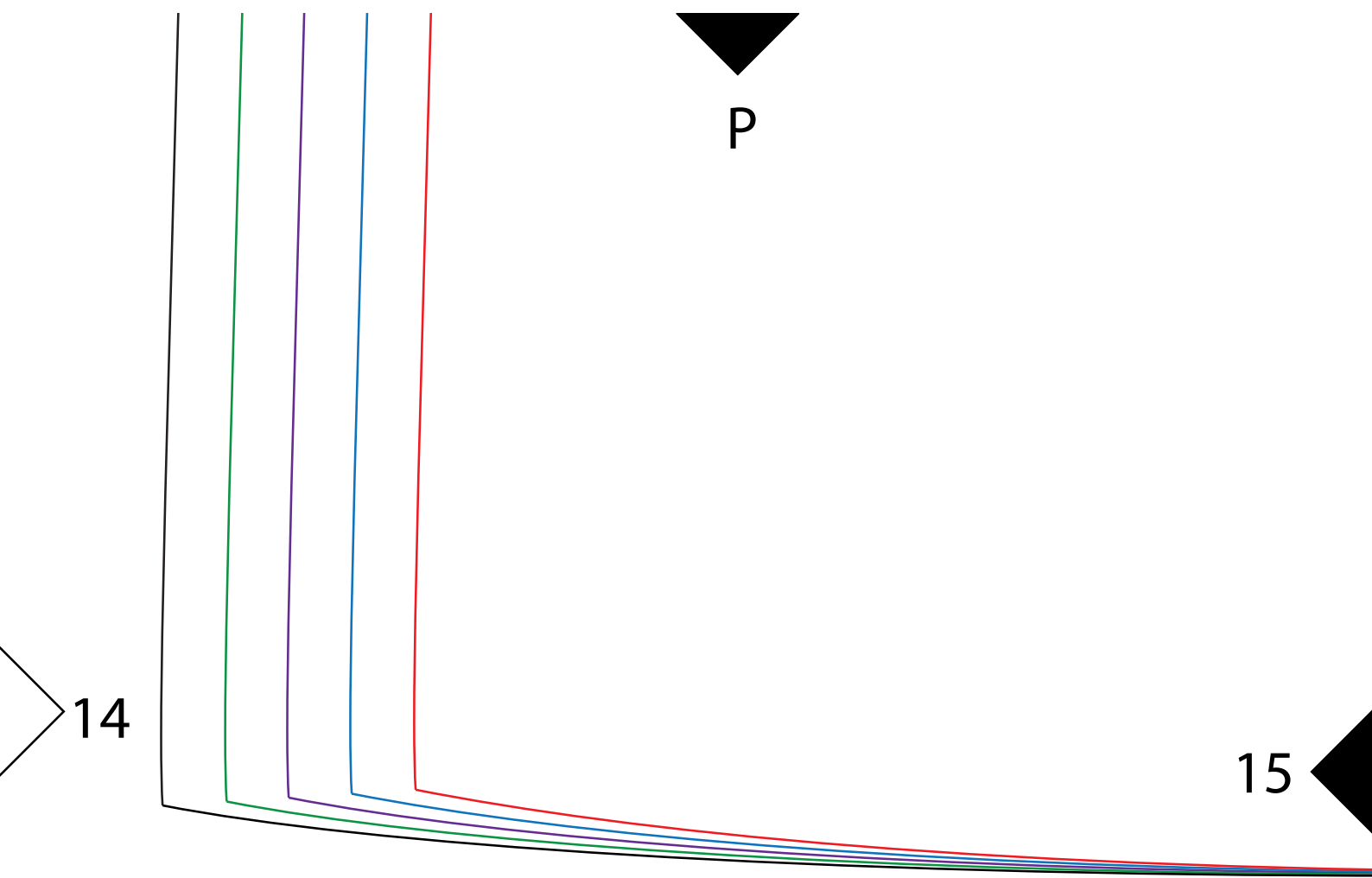
N



13



14





Q



15