

4 INCH SQUARE
10.2 CM SQUARE

MEASURE TO ENSURE
PATTERN PRINTS TO SCALE

*ENSURE PRINTER IS SET TO
"NO SCALING"



© Closet Core Studio Inc. 2021

The contents of this pattern (including instructions, photos & diagrams) are protected by copyright and belong exclusively to Closet Core Studio Inc. You may use this pattern for domestic use only. Garments made from this pattern and sold commercially are expressly prohibited. No part of this pattern may be reproduced or resold, although it is permitted to print single copies for domestic use. [2021-03-08]

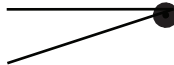

CORE

T-Shirt Pattern

SIZE GUIDE

SIZE 14	-----
SIZE 16
SIZE 18	- - - - -
SIZE 20	-----
SIZE 22
SIZE 24	- - - - -
SIZE 26	-----
SIZE 28
SIZE 30	- - - - -
SIZE 32	-----

LEGEND

●	MATCHING POINT
—	NOTCH
↔	GRAINLINE
	DART
	BUTTON LOCATION

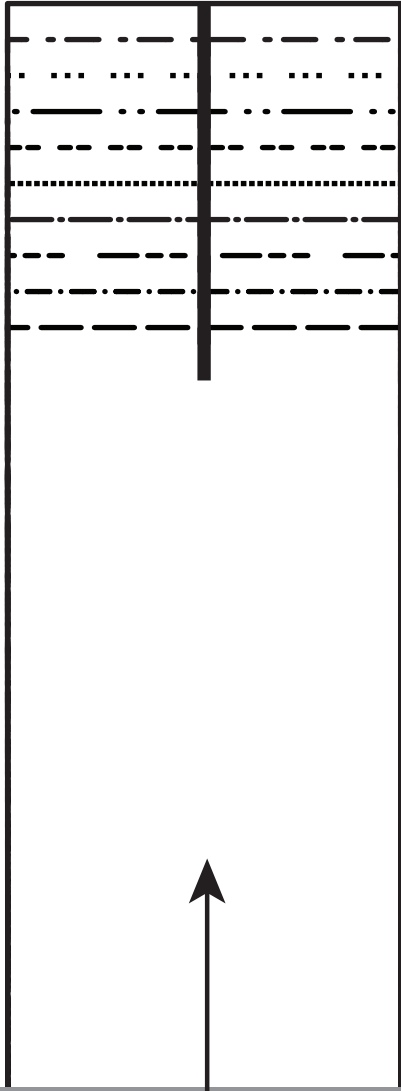


Find us on Instagram:

@CLOSETCOREPATTERNS

#CLOSETCORETSHIRT

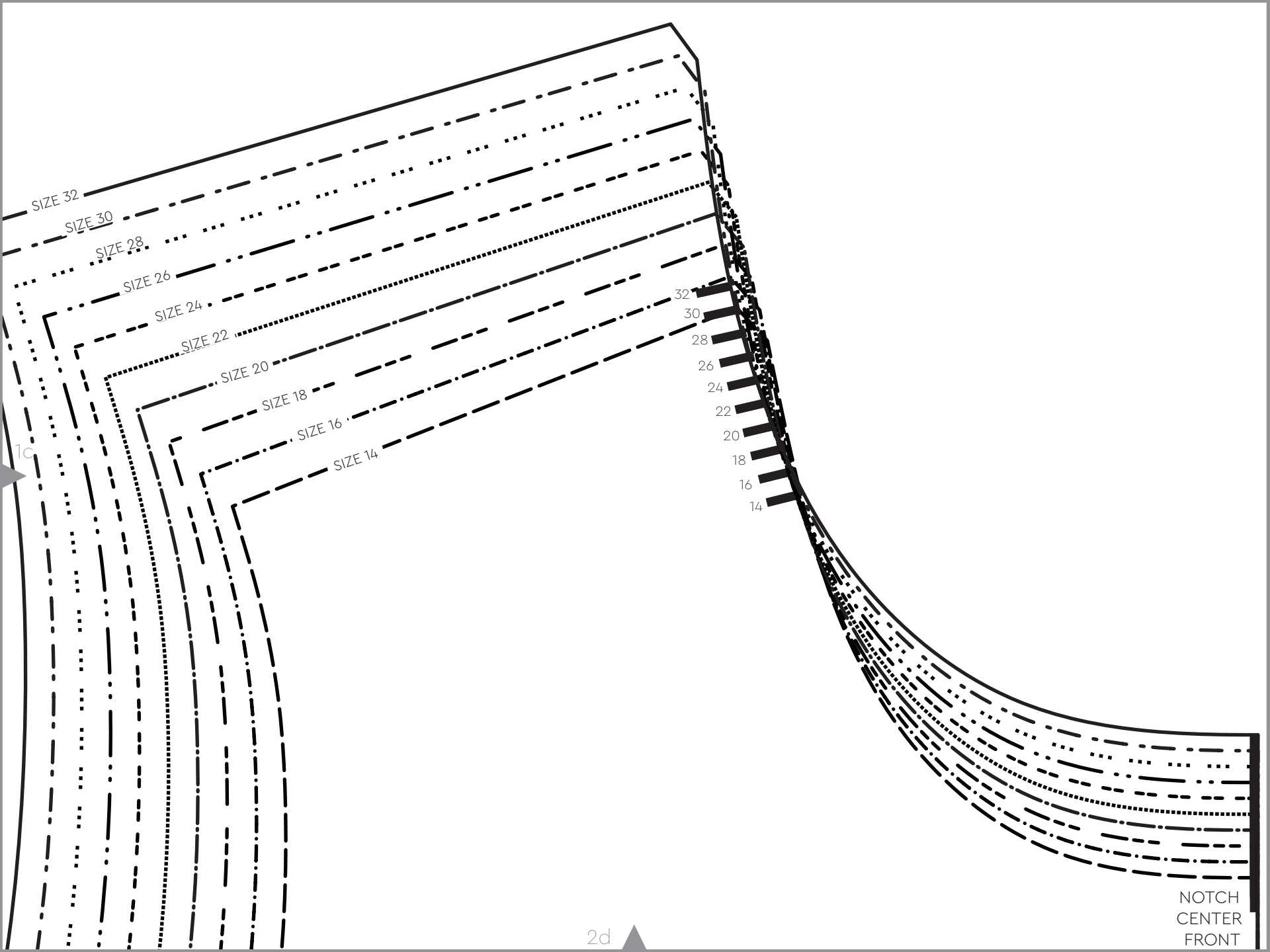
#CLOSETCOREPATTERNS



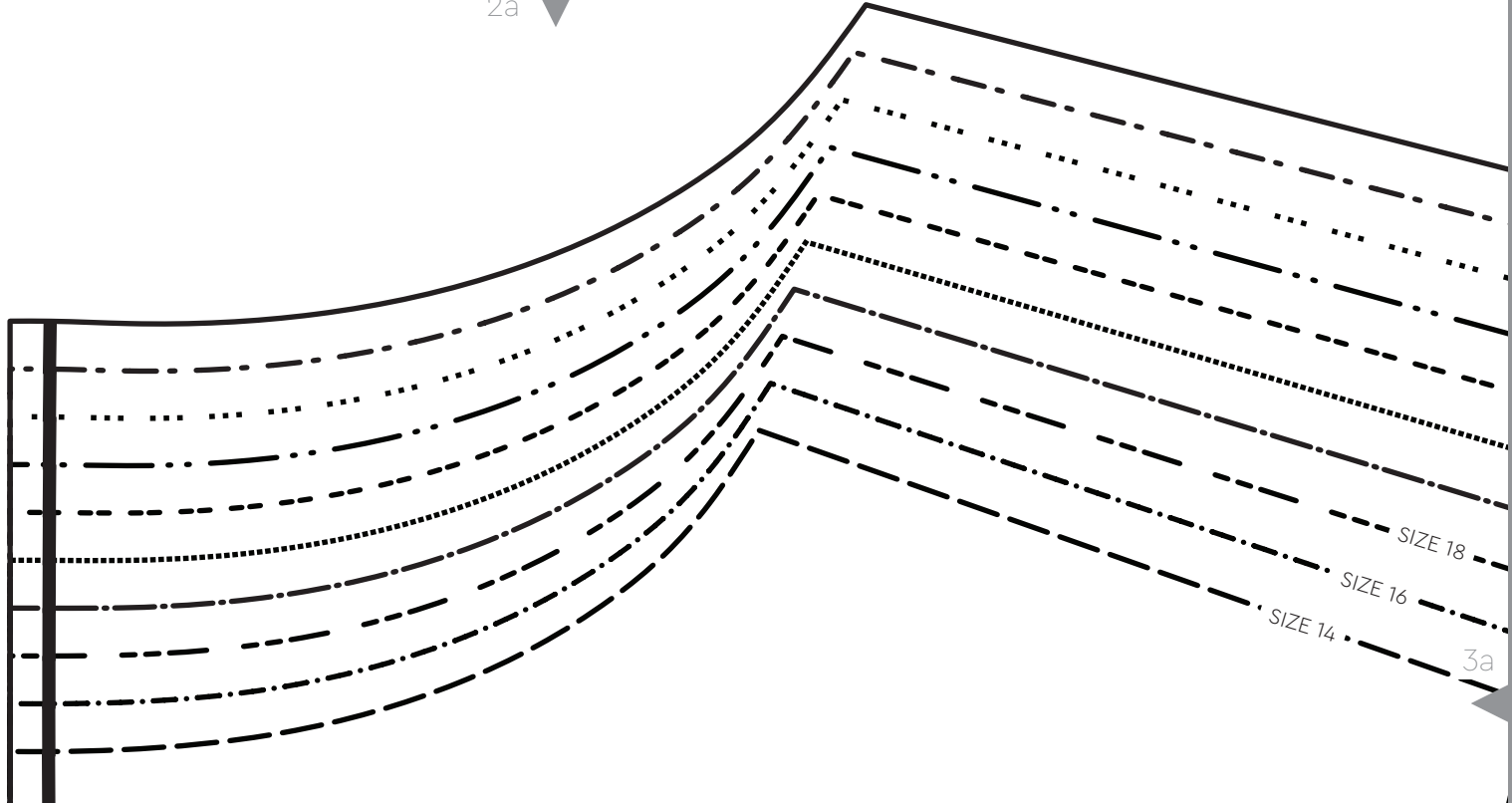
SIZES 14 - 32



2c



2a

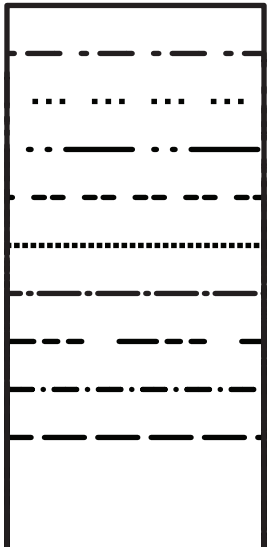


SIZE 18

SIZE 16

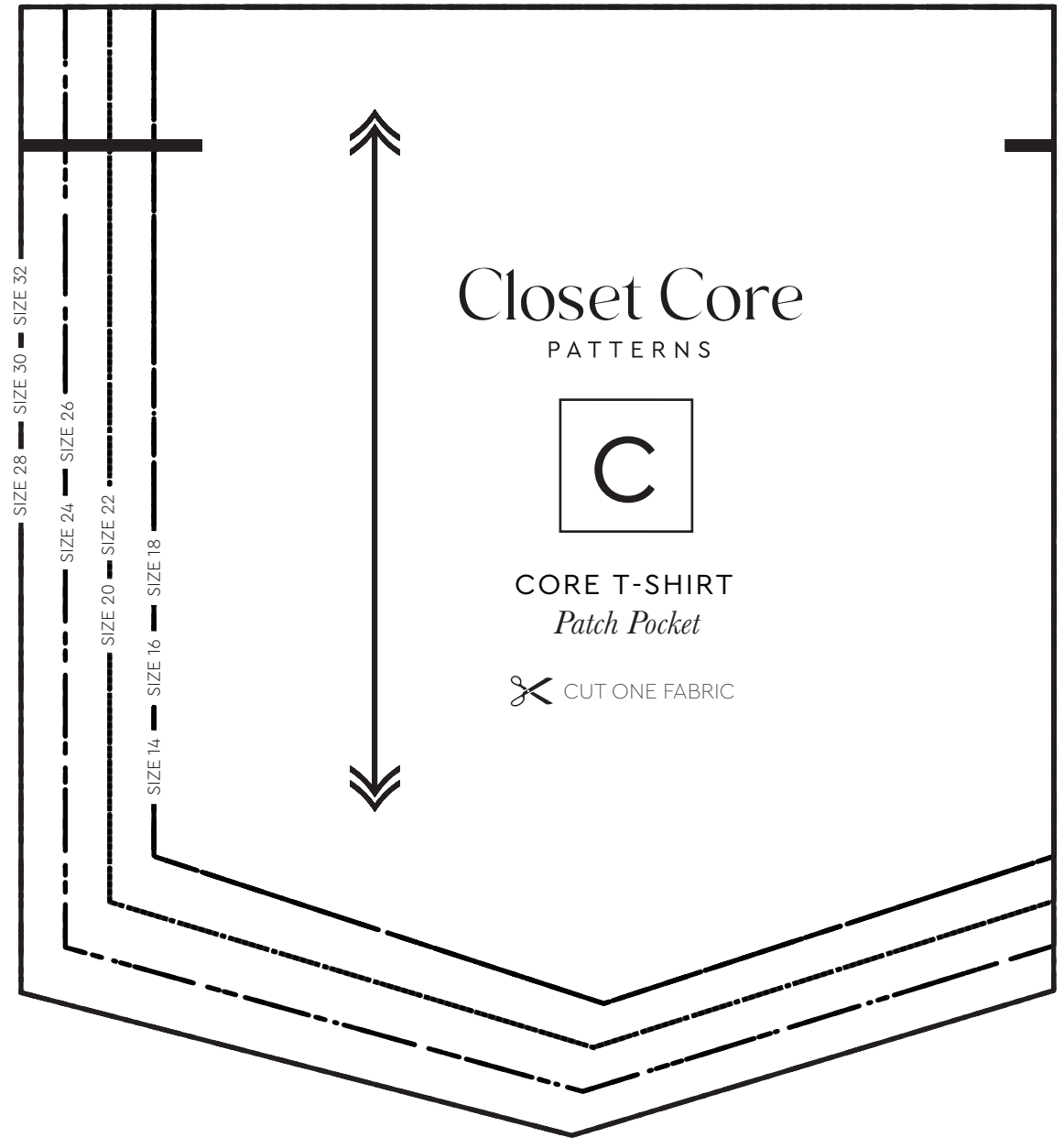
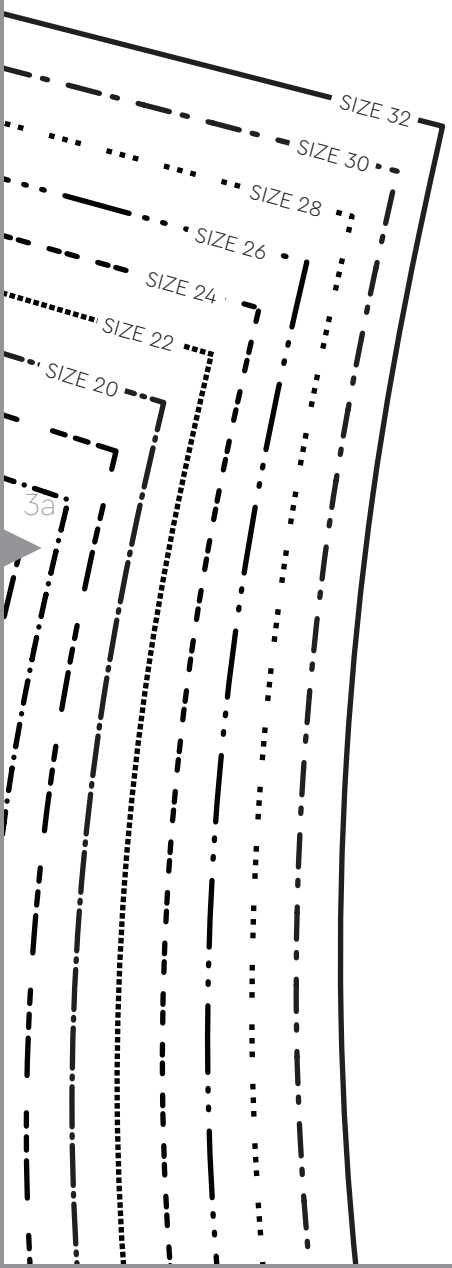
SIZE 14

3a



4a





2c

GREATEST STRETCH



CORE T-SHIRT

Neckband

CUT ONE FABRIC

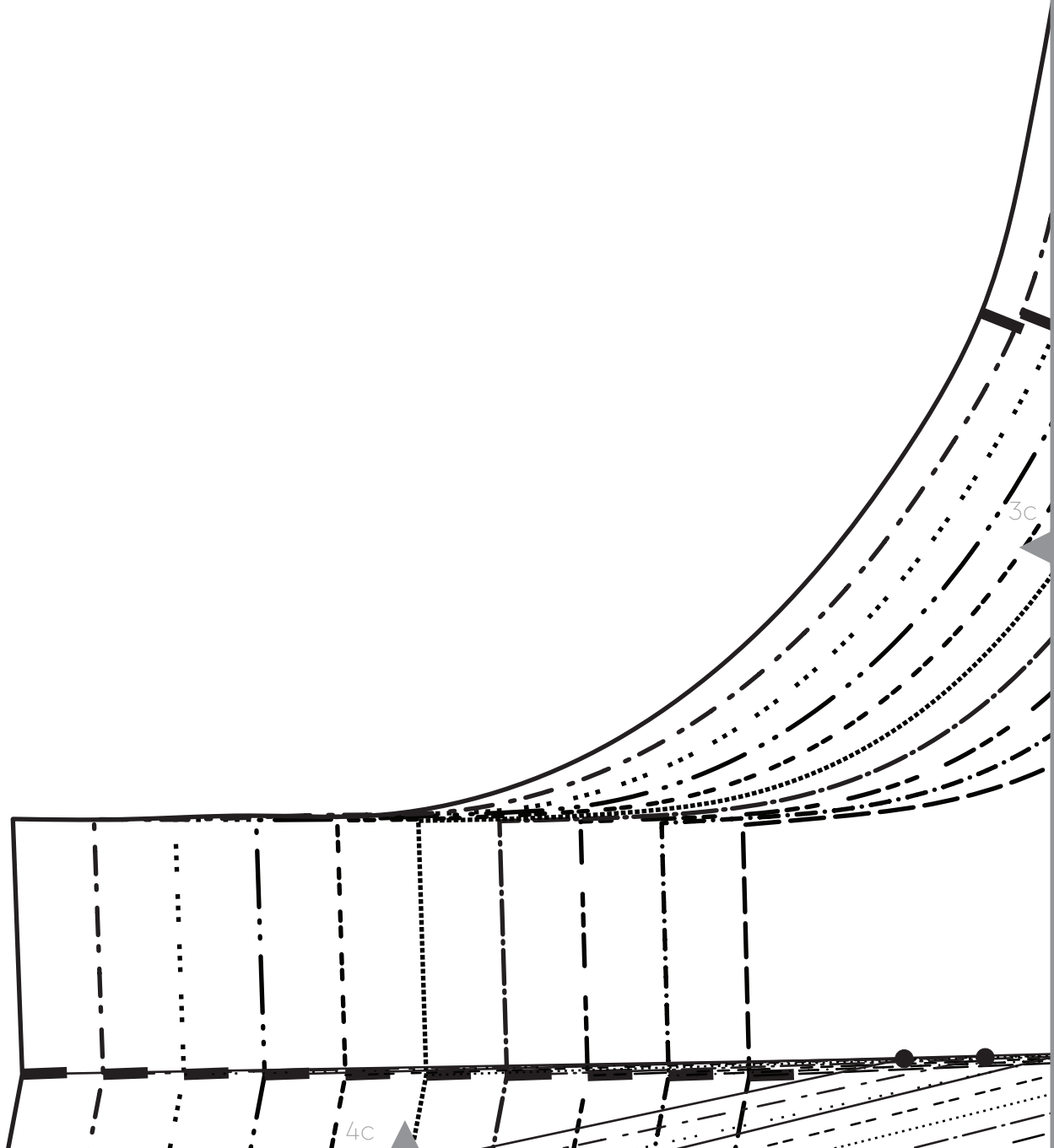


D

3b

3c

4c



2d

Closet Core

PATTERNS

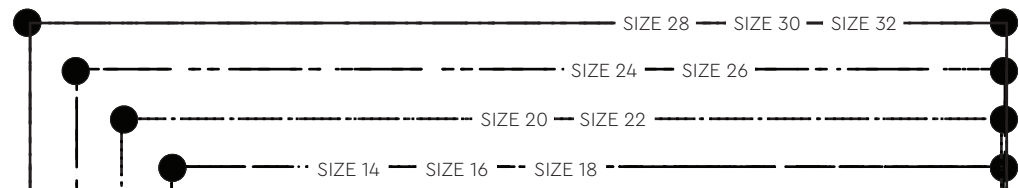
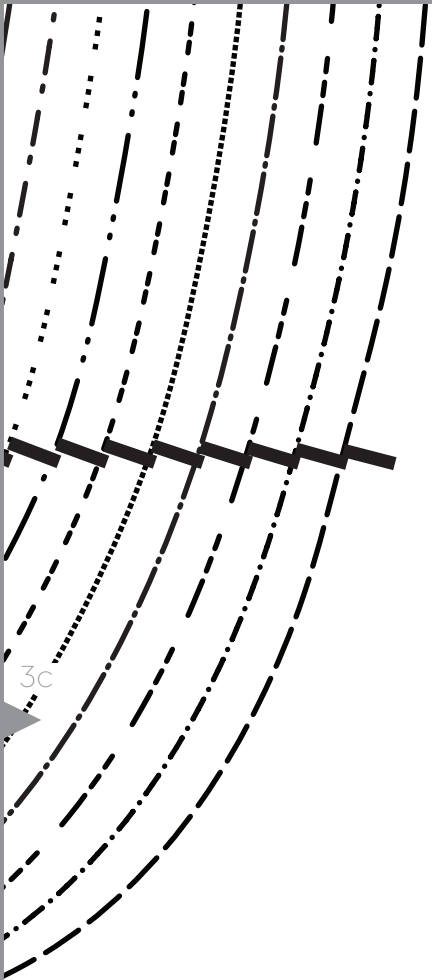


CORE T-SHIRT

Shirt Front

 CUT ONE FABRIC ON FOLD

3/8" SEAM ALLOWANCE IS INCLUDED IN PATTERN UNLESS OTHERWISE STATED

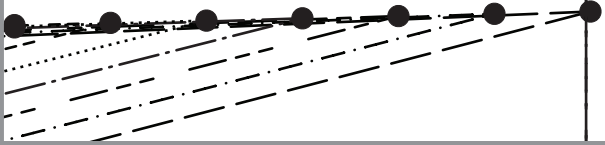


SUGGESTED POCKET LOCATION
(LEFT SIDE ONLY)

BUST APEX



4d



4a

Closet Core

PATTERNS



CORE T-SHIRT

Shirt Back

 CUT ONE FABRIC ON FOLD

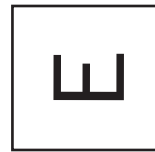
3/8 " SEAM ALLOWANCE IS INCLUDED IN
PATTERN UNLESS OTHERWISE STATED

5a

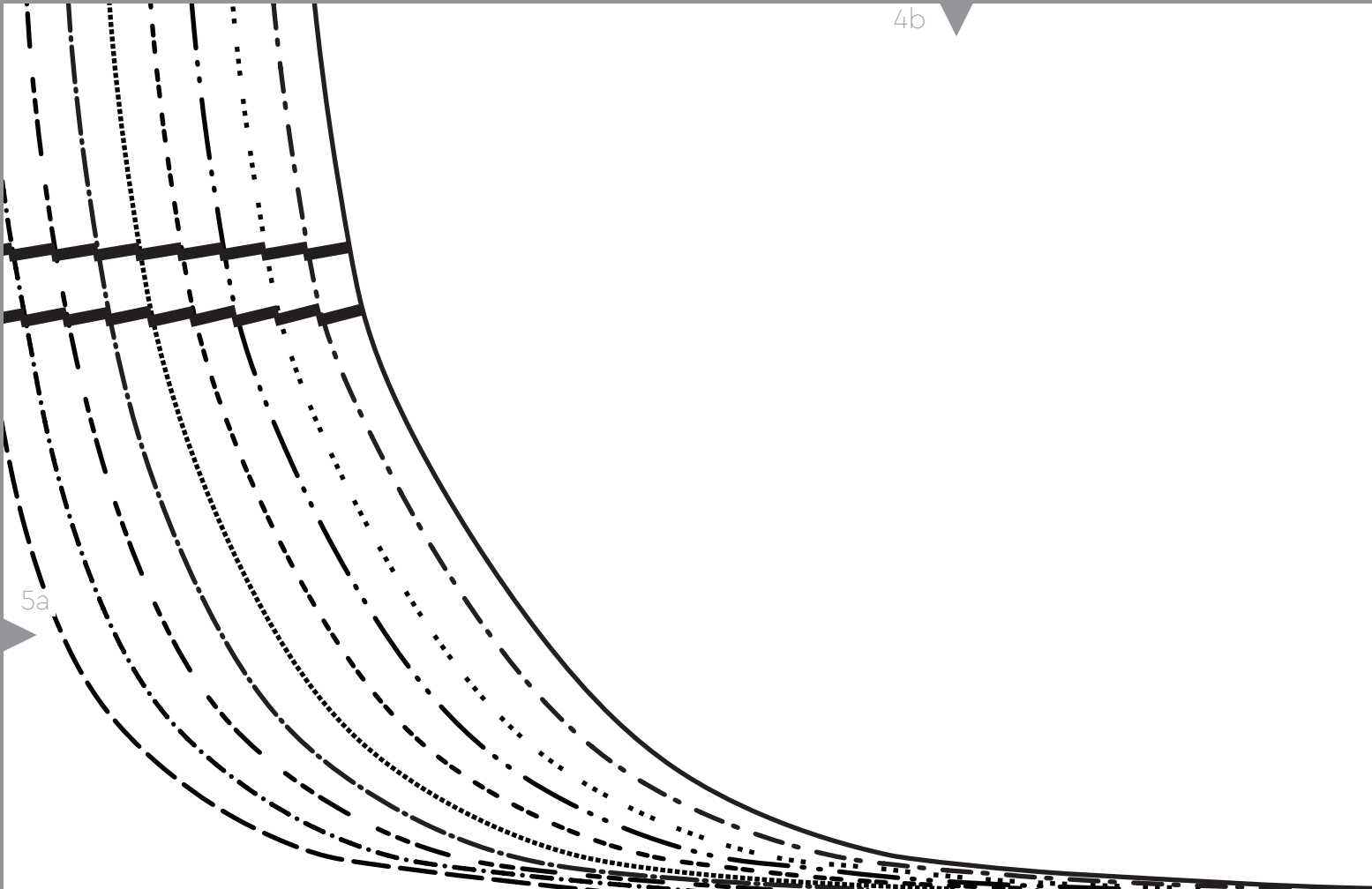


6a

CORE T-SHIRT
Back Neck and Shoulder Binding
 CUT ONE FABRIC



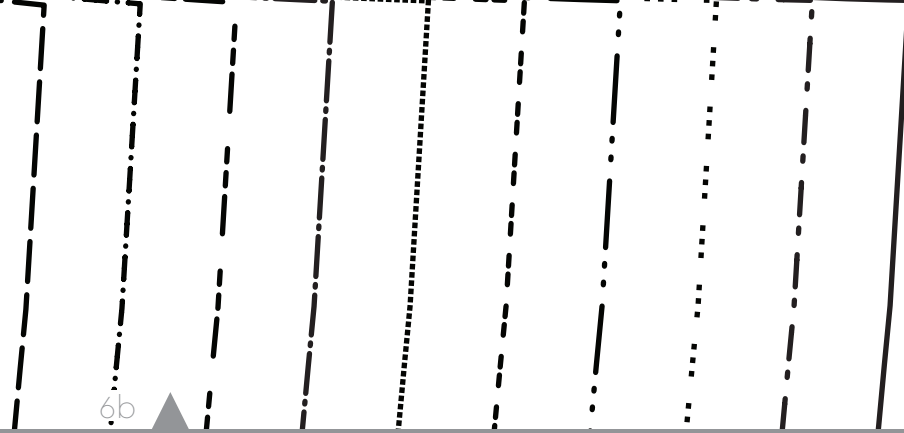
4b



5a

5b

6b





5b

SIZE 30

SIZE 30

SIZE 28

SIZE 26

SIZE 24

SIZE 22

SIZE 20

SIZE 18

SIZE 16

SIZE 14

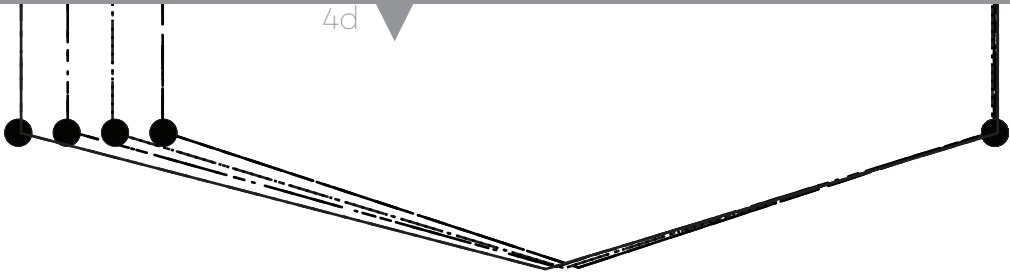
5c

⊗ WAIST NOTCH

6c

4c

4d



GREATEST STRETCH



5c



LENGTHEN/SHORTEN HERE

6d



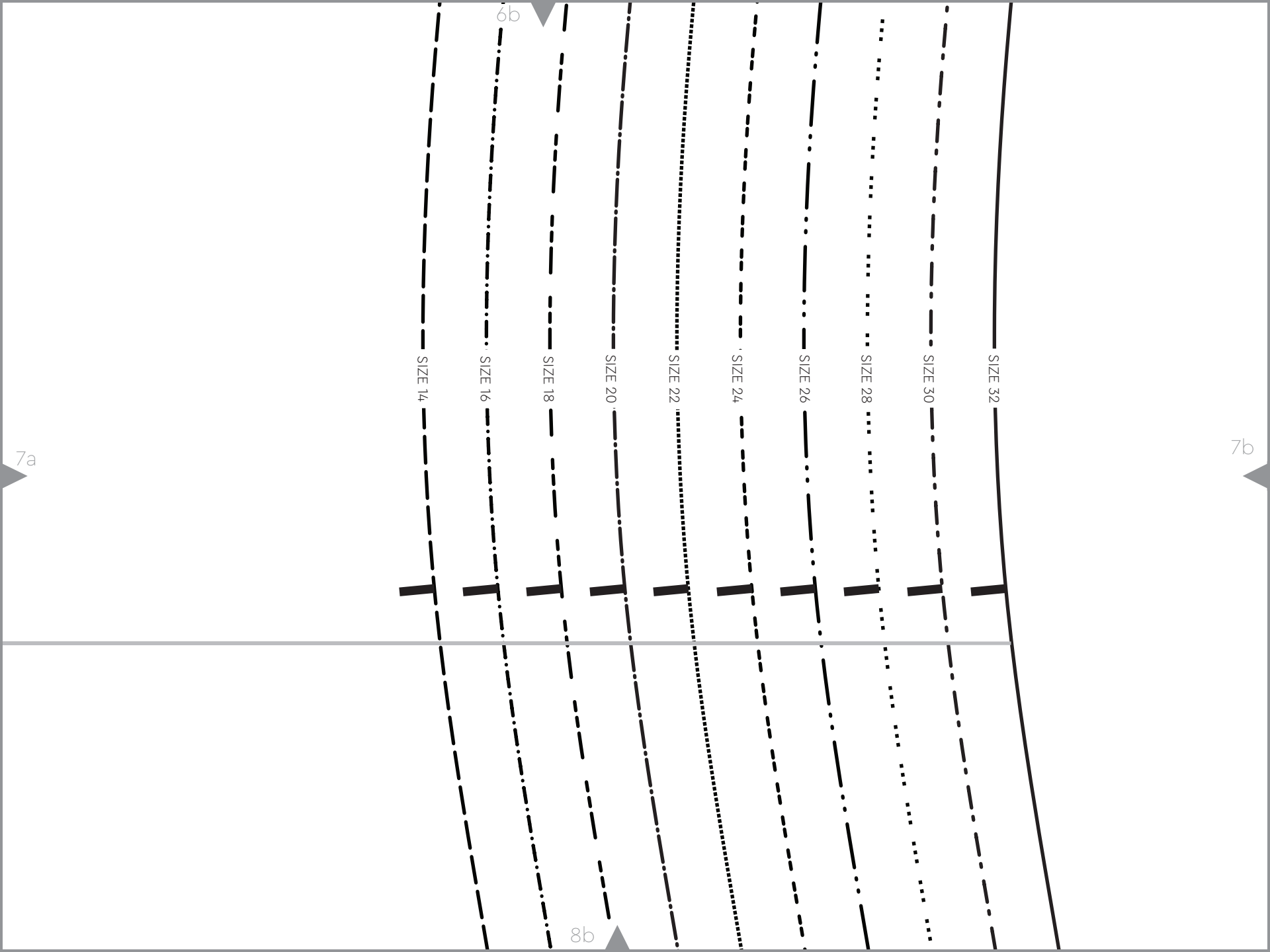


6a

7a

LENGTHEN/SHORTEN HERE

8a



7a

7b

6b

8b

SIZE 14

SIZE 16

SIZE 18

SIZE 20

SIZE 22

SIZE 24

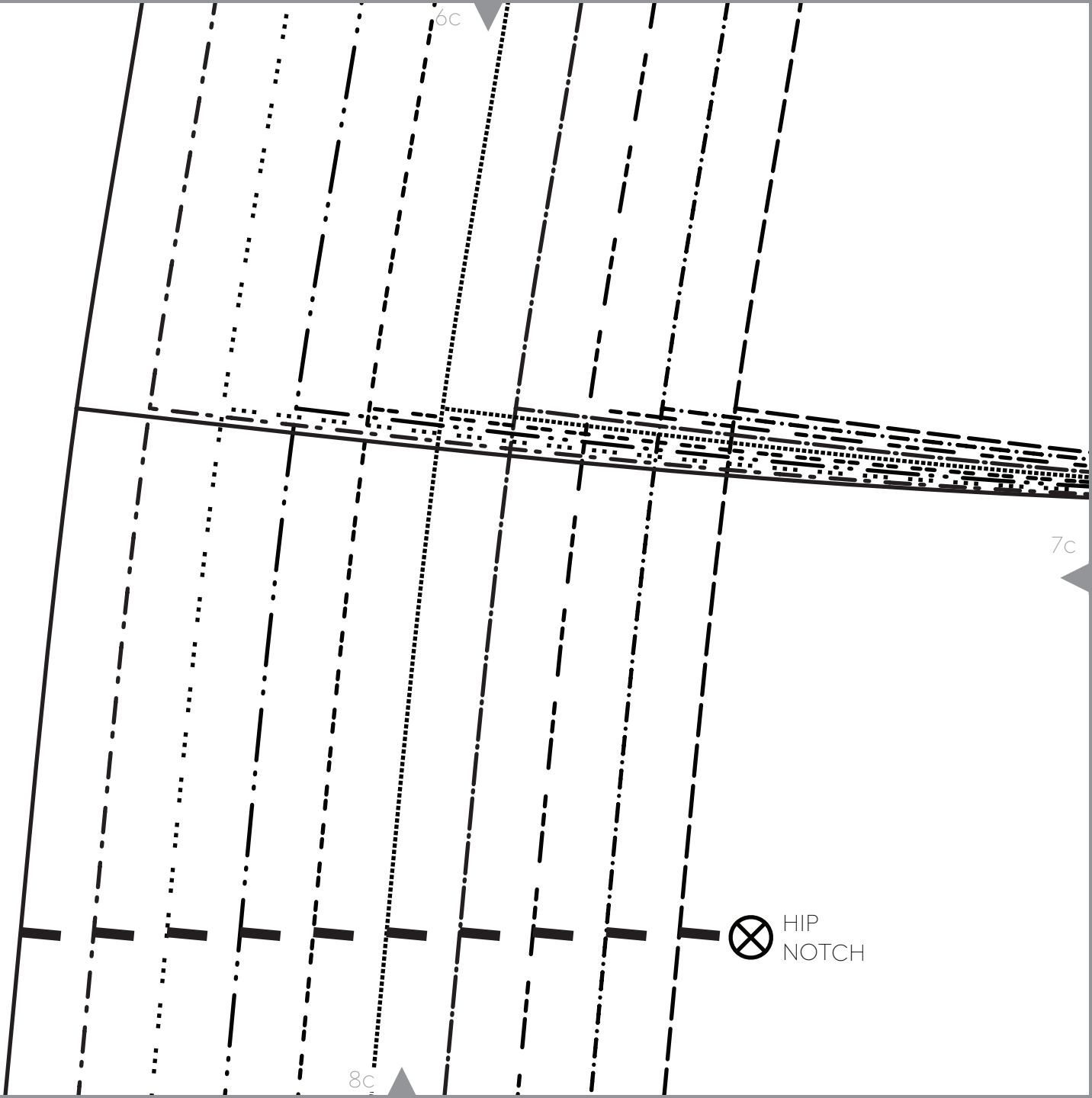
SIZE 26

SIZE 28

SIZE 30

SIZE 32

---	SIZE 14
-·-	SIZE 16
- - -	SIZE 18
-·-	SIZE 20
···	SIZE 22
- - -	SIZE 24
-·-	SIZE 26
···	SIZE 28
- - -	SIZE 30
---	SIZE 32



6c

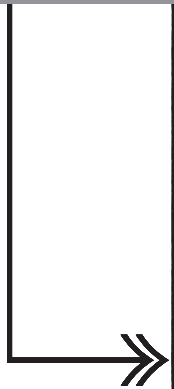
7b

7c

⊗ HIP NOTCH

8c

6d



CUT HERE FOR VIEW A: CROPPED



7c



8d



8a



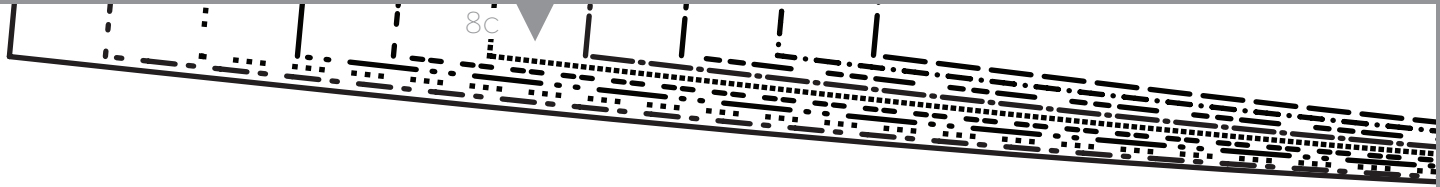
CUT HERE FOR VIEW A: CROPPED

- SIZE 14
- SIZE 16
- SIZE 18
- SIZE 20
- SIZE 22
- SIZE 24
- SIZE 26
- SIZE 28
- SIZE 30
- SIZE 32

CUT HERE FOR VIEW B: MID-LENGTH

9a

10a



8c

9c

9b

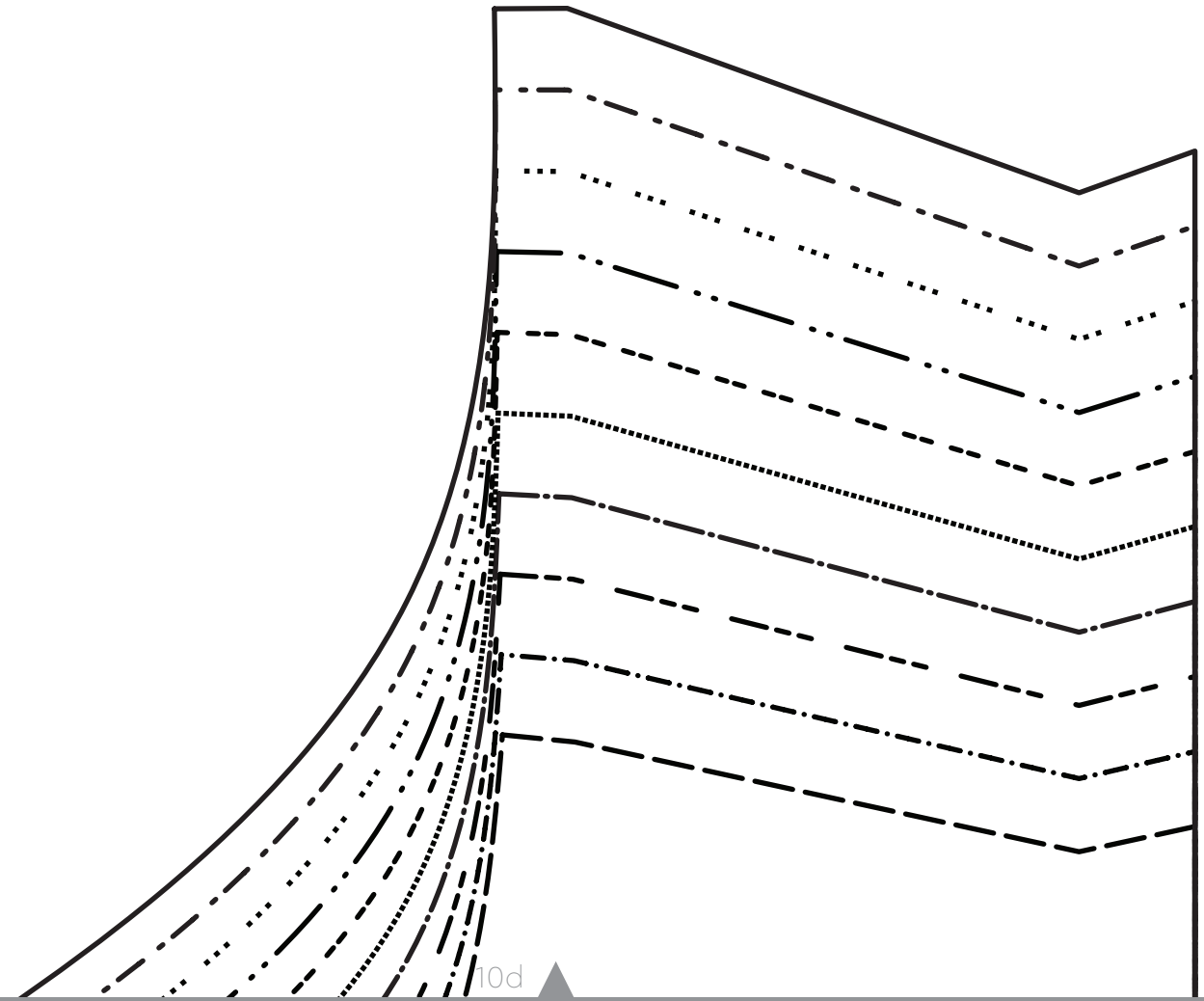
10c

8d

CUT HERE FOR VIEW B: MID-LENGTH



9c



10d

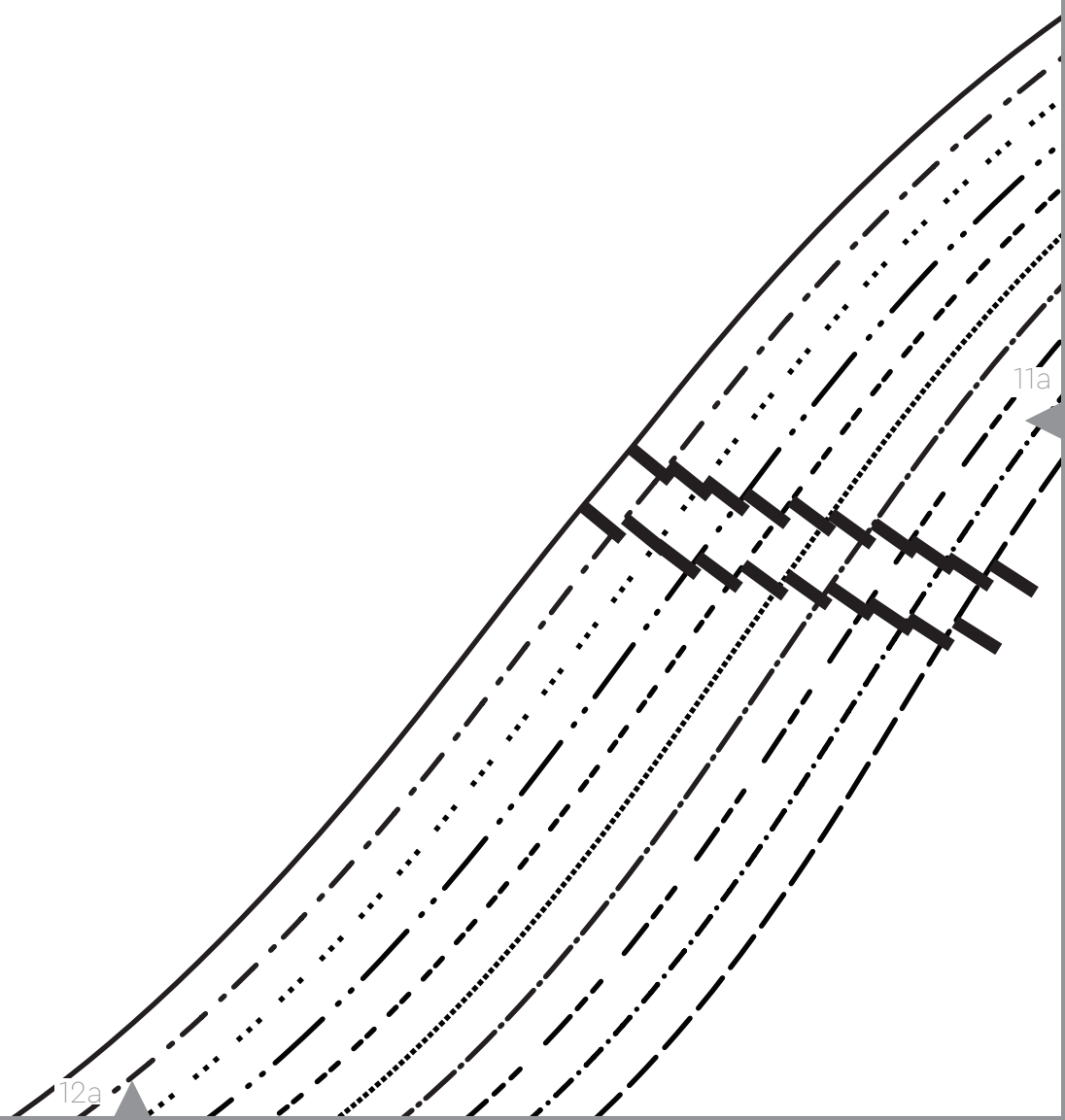
10a

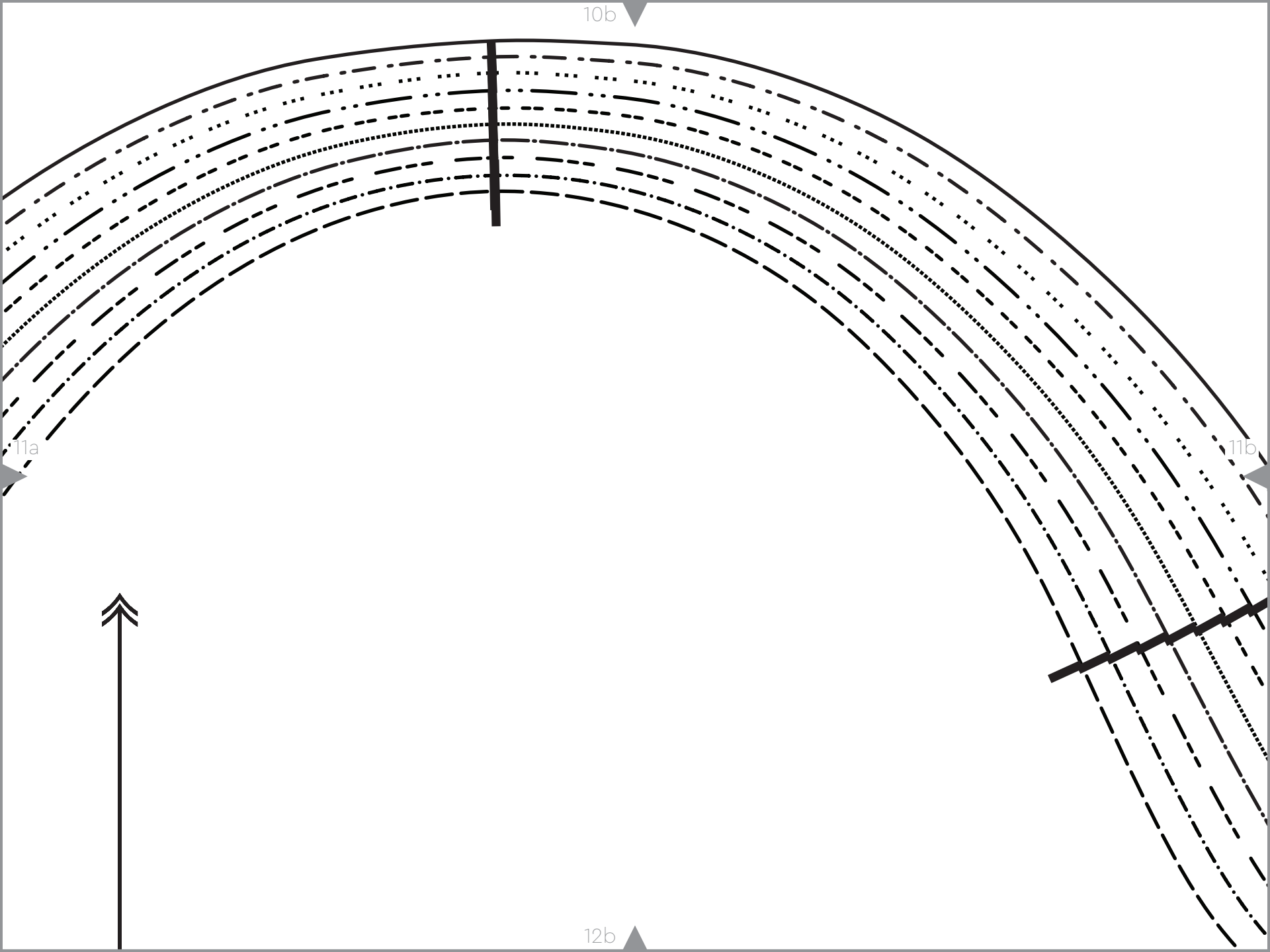


12a



11a





10b

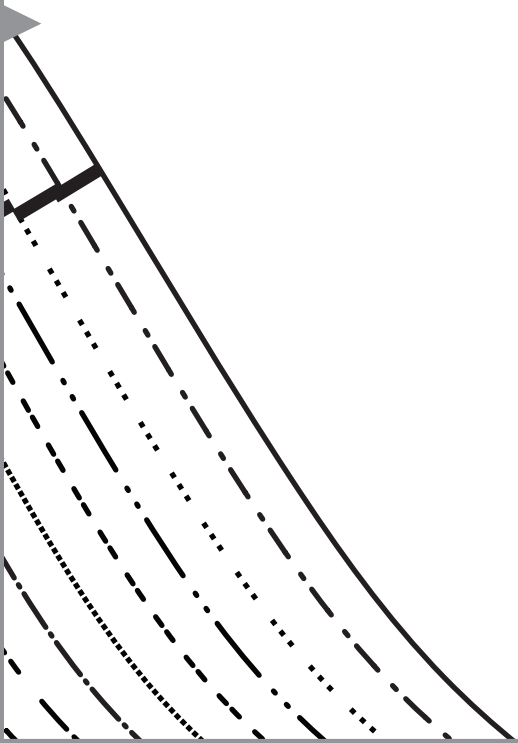
11a

11b

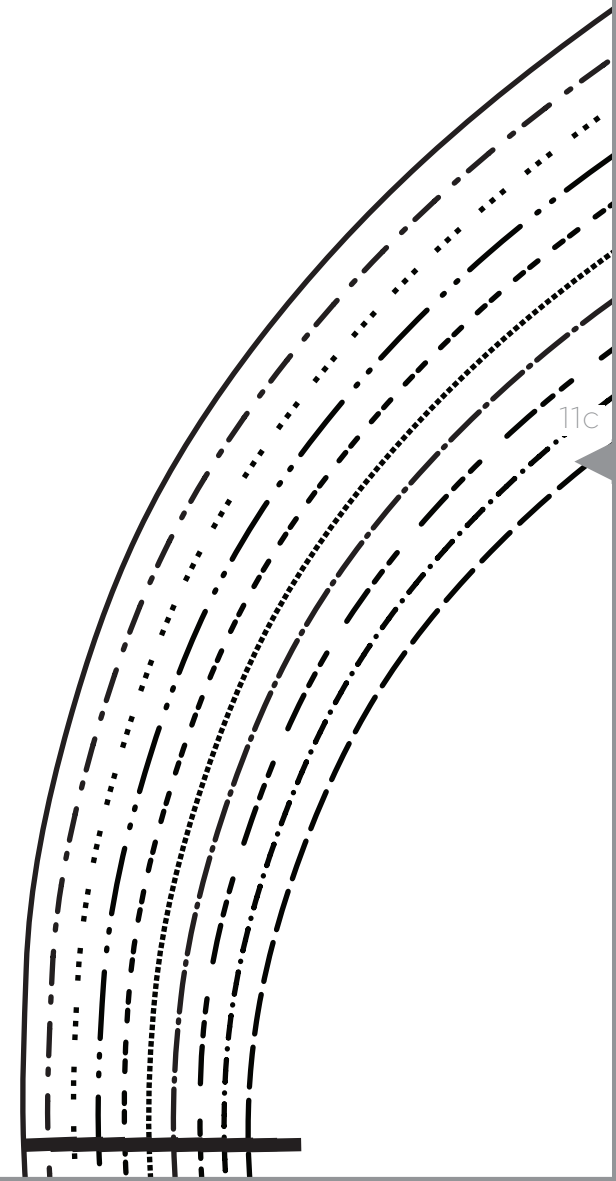
12b

10c

11b



11c



12c



Closet Core PATTERNS

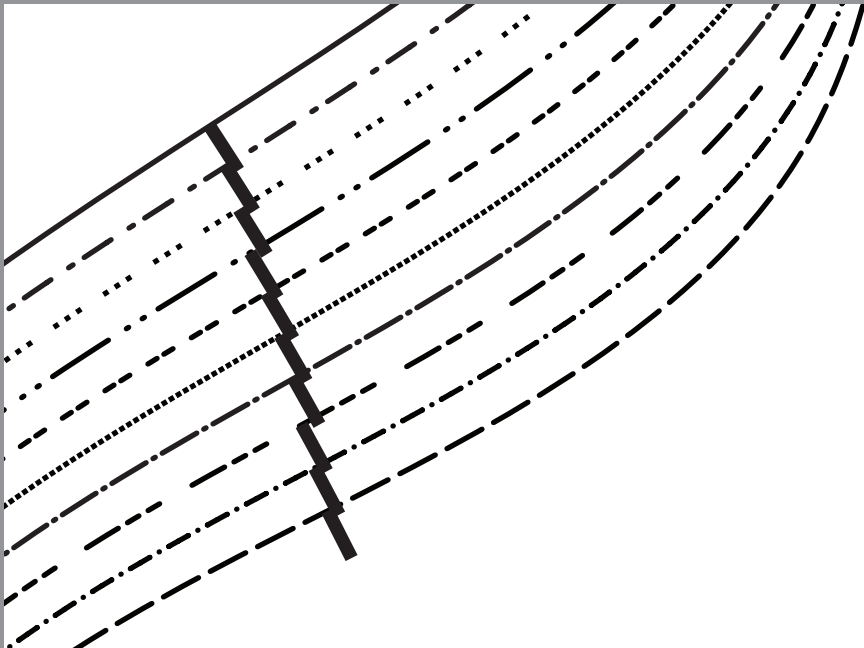


CORE T-SHIRT
Short Sleeve

 CUT TWO FABRIC

3/8" SEAM ALLOWANCE IS INCLUDED IN
PATTERN UNLESS OTHERWISE STATED

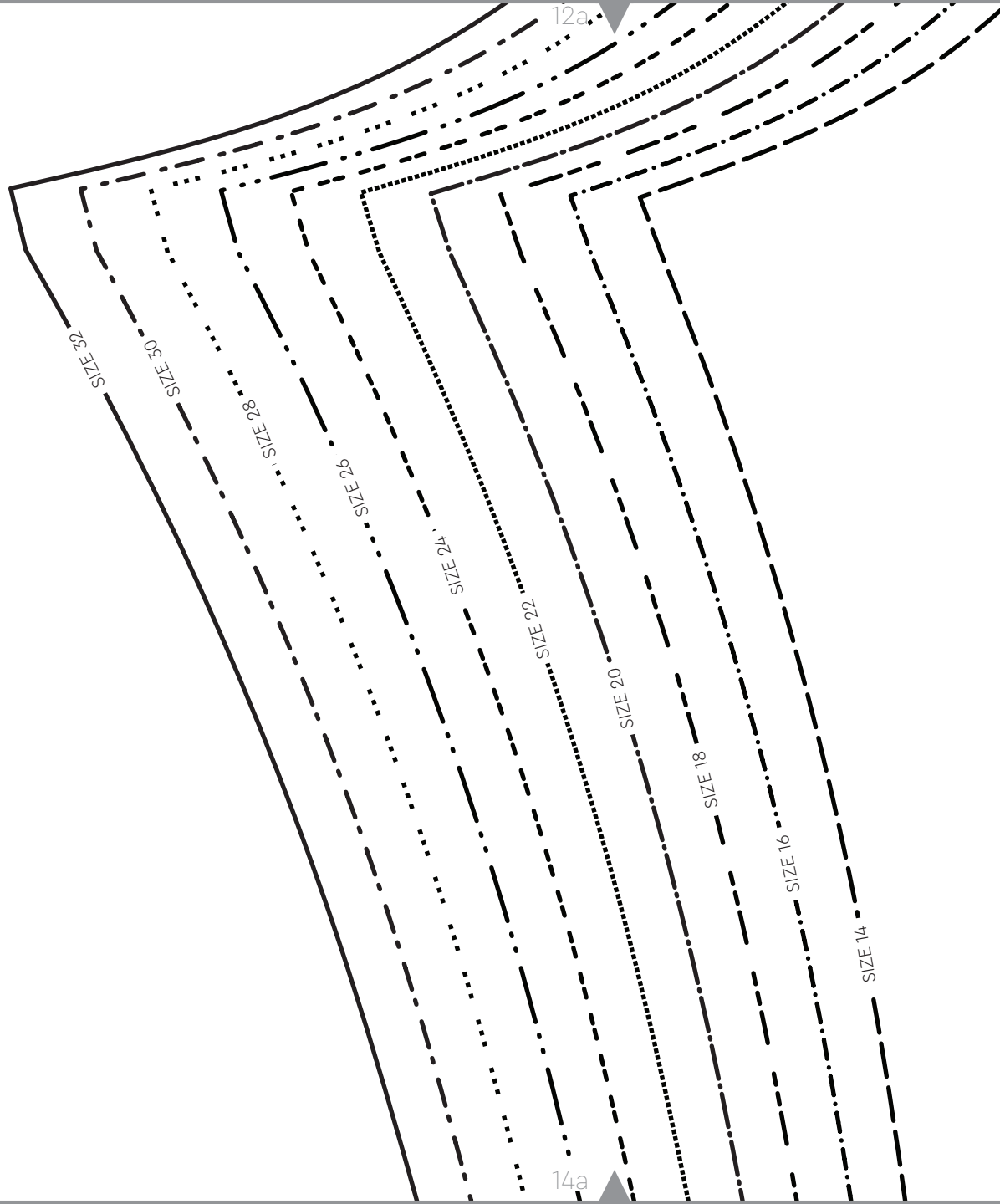
GREATEST STRETCH 



11c

10d

12d



12a

13a

14a

12b

Closet Core

PATTERNS



CORE T-SHIRT

3/4 Sleeve

 CUT TWO FABRIC

3/8 " SEAM ALLOWANCE IS INCLUDED IN
PATTERN UNLESS OTHERWISE STATED

GREATEST STRETCH

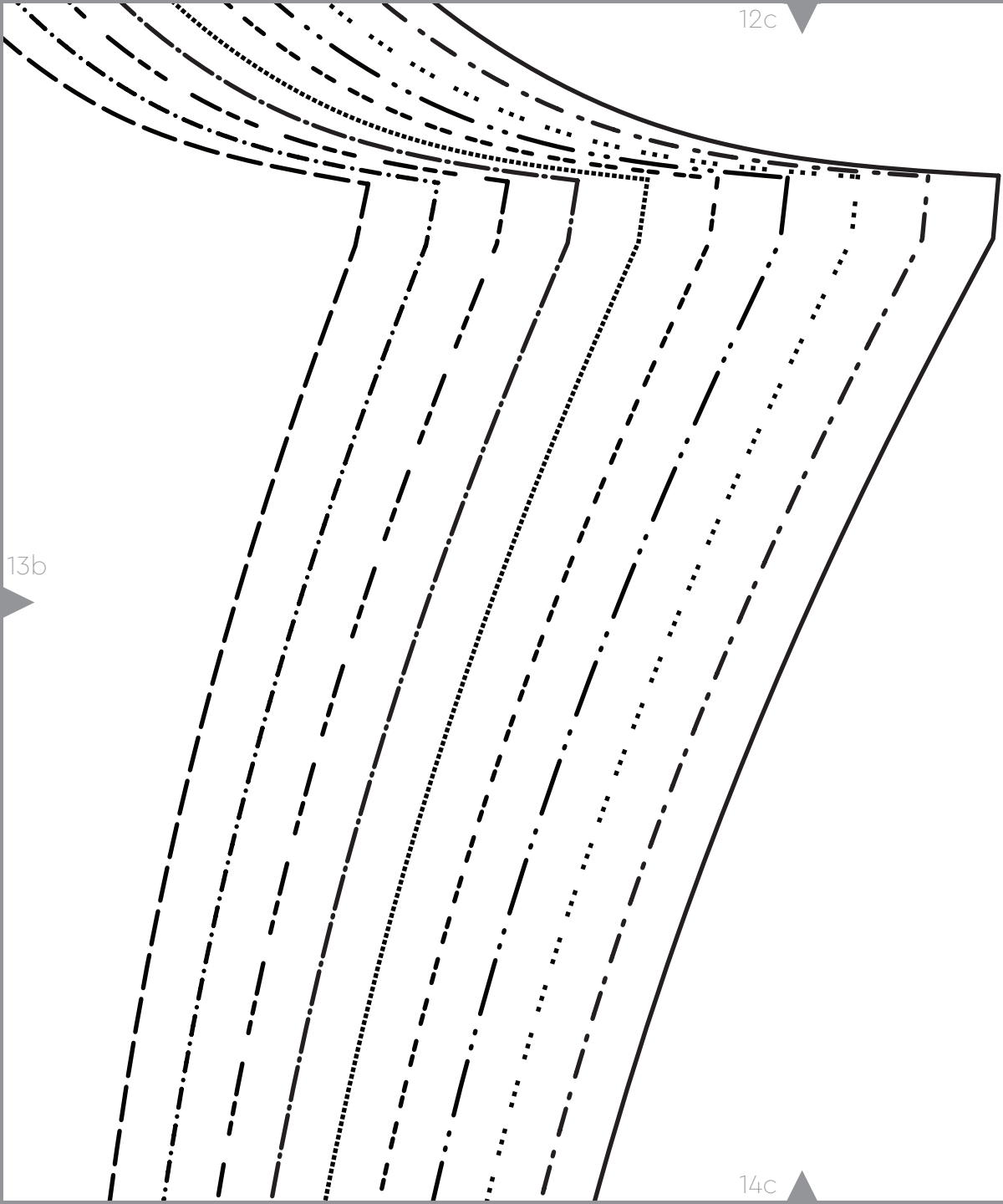


13a

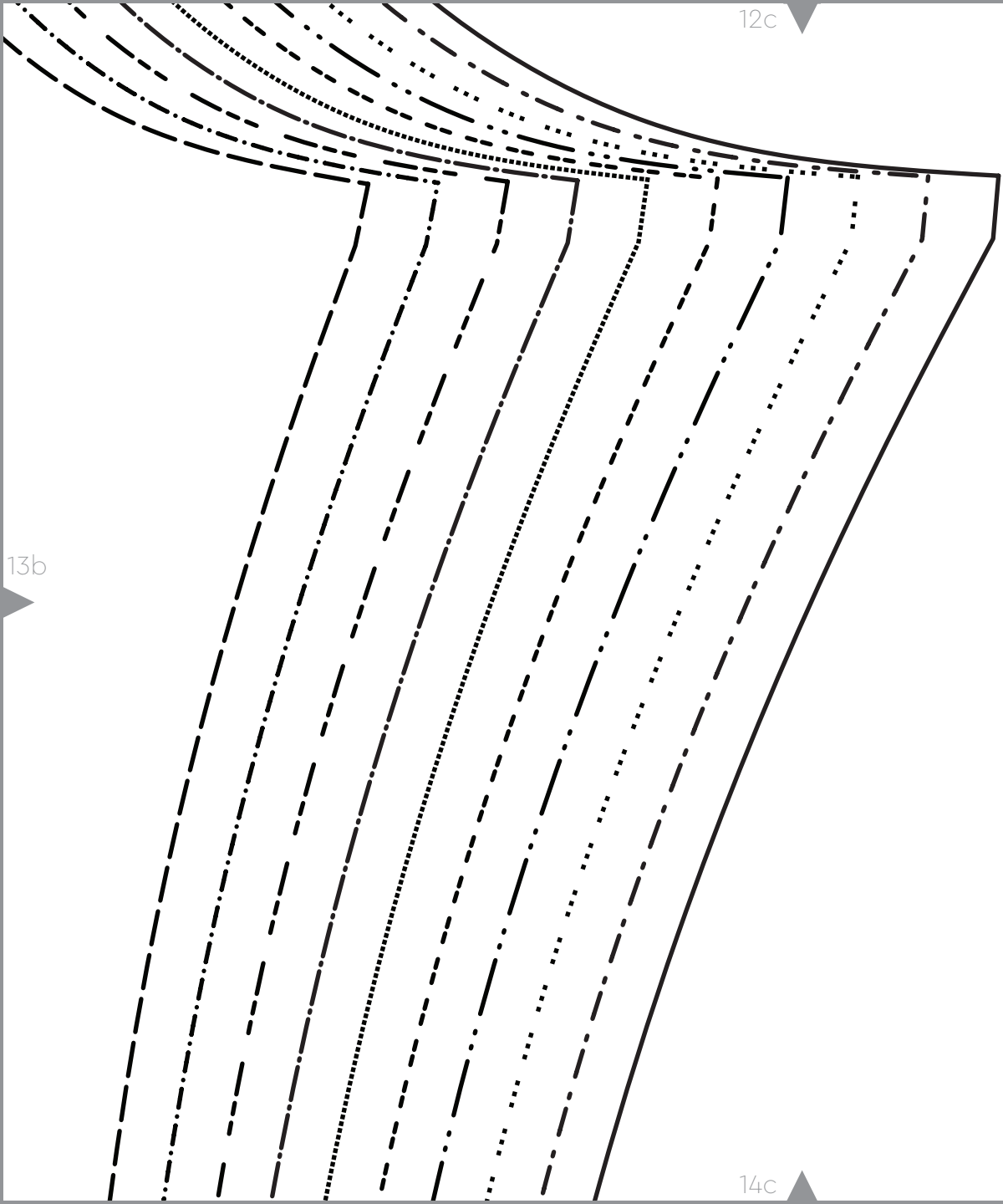
13b

14b

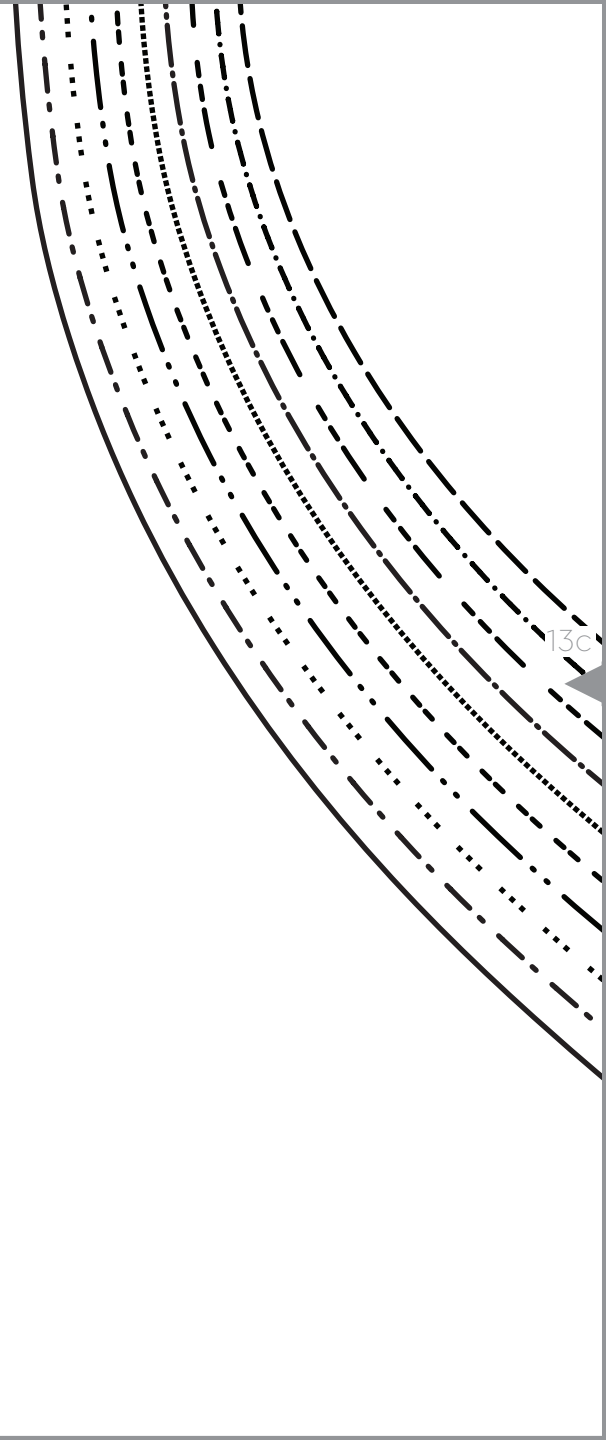
12c



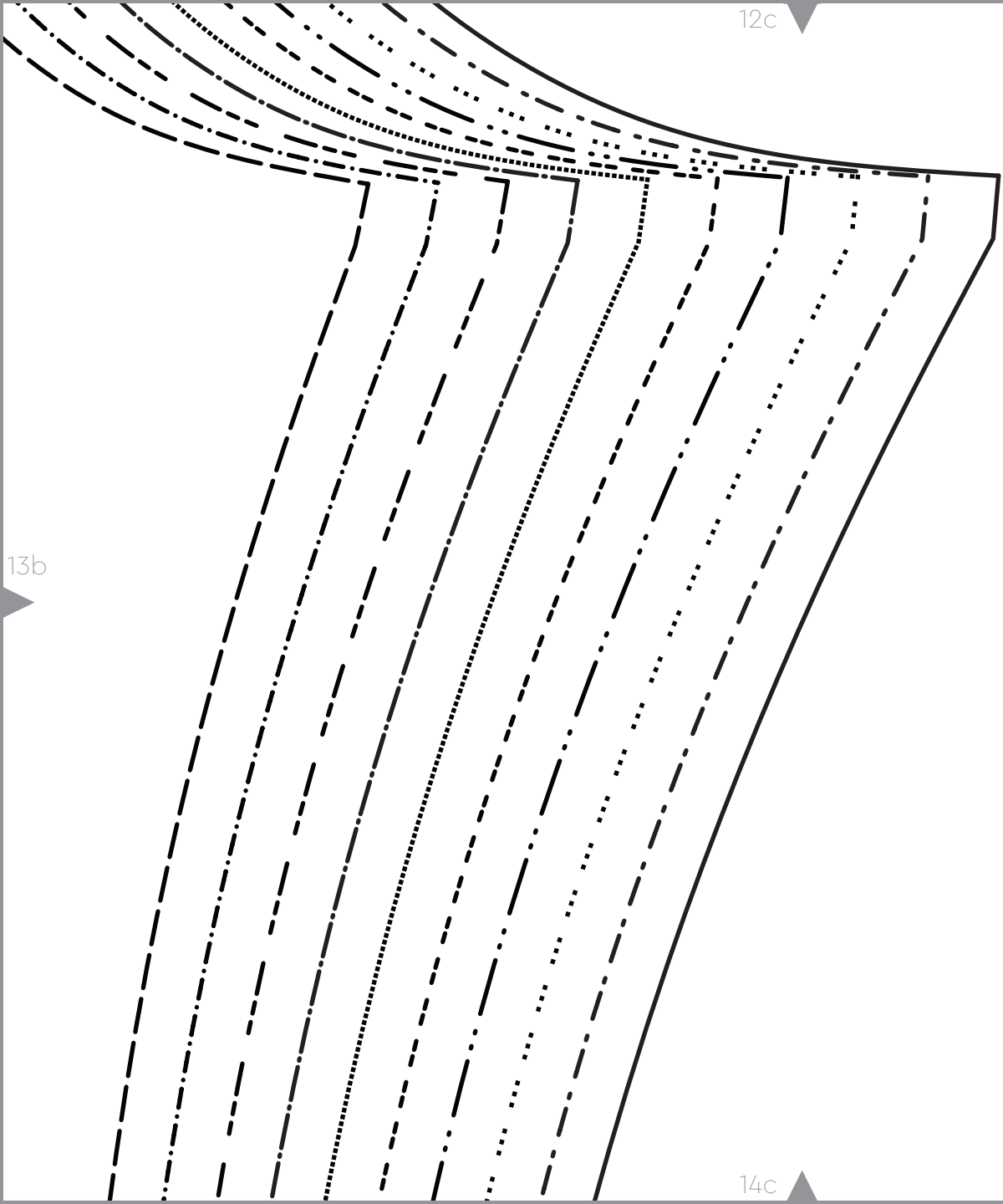
13b



13c



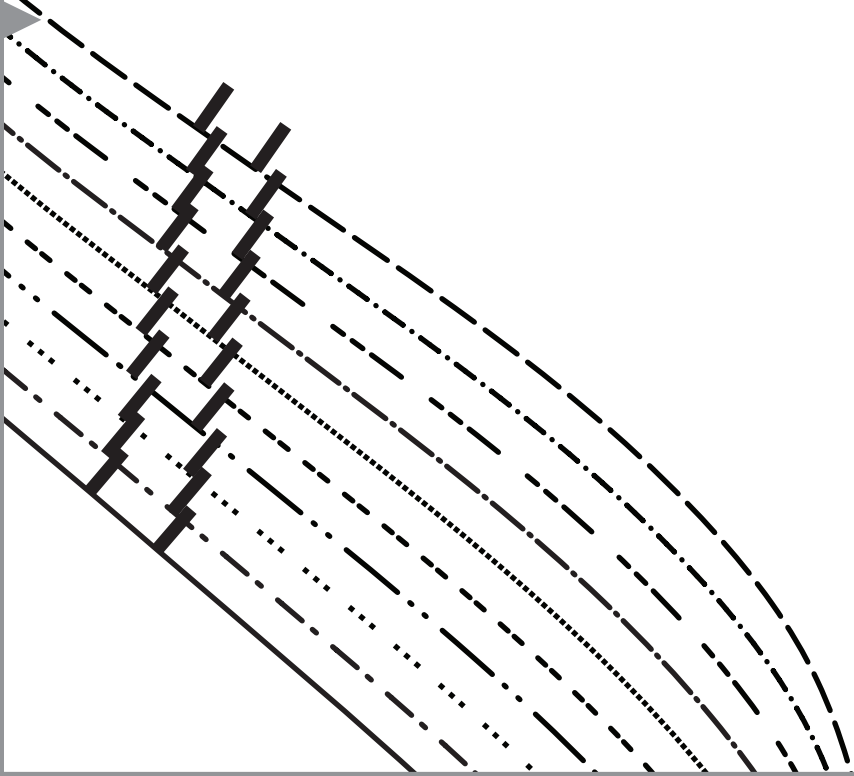
14c



12d

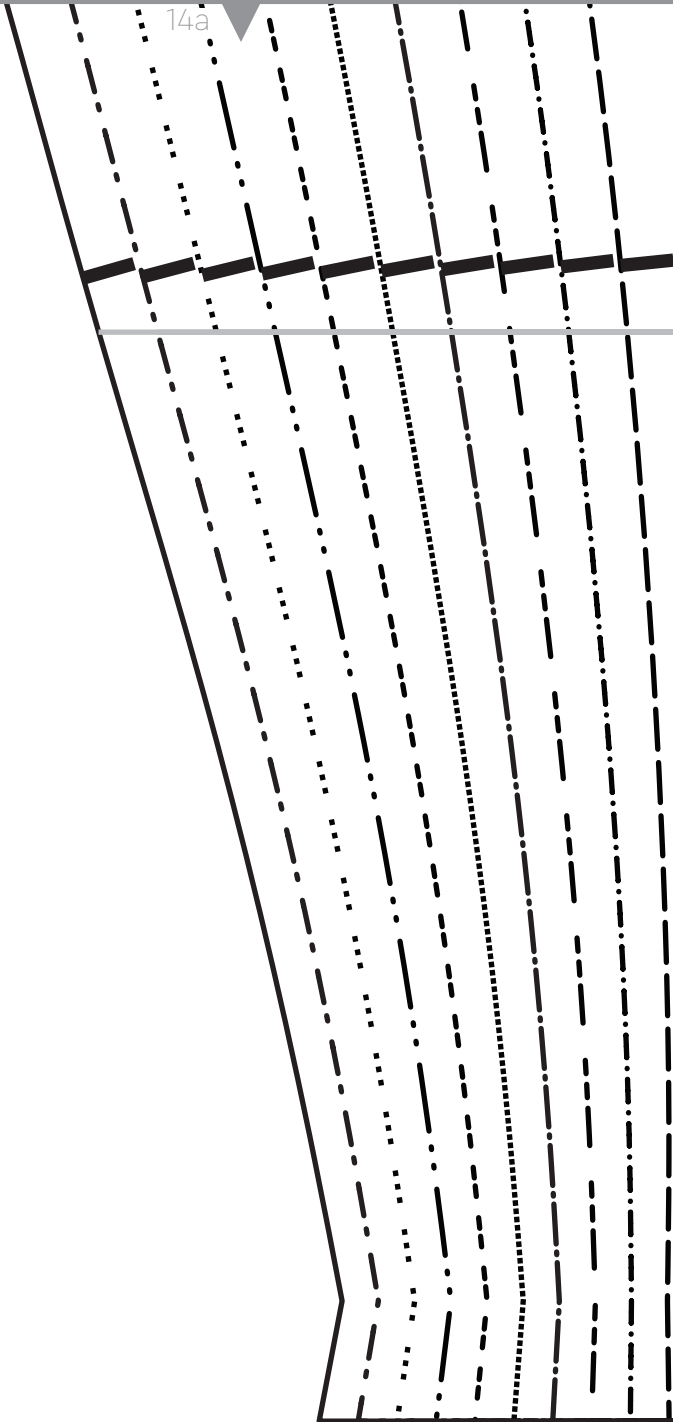


13c



14d





14a

15a

14b

LENGTHEN/SHORTEN HERE

15a

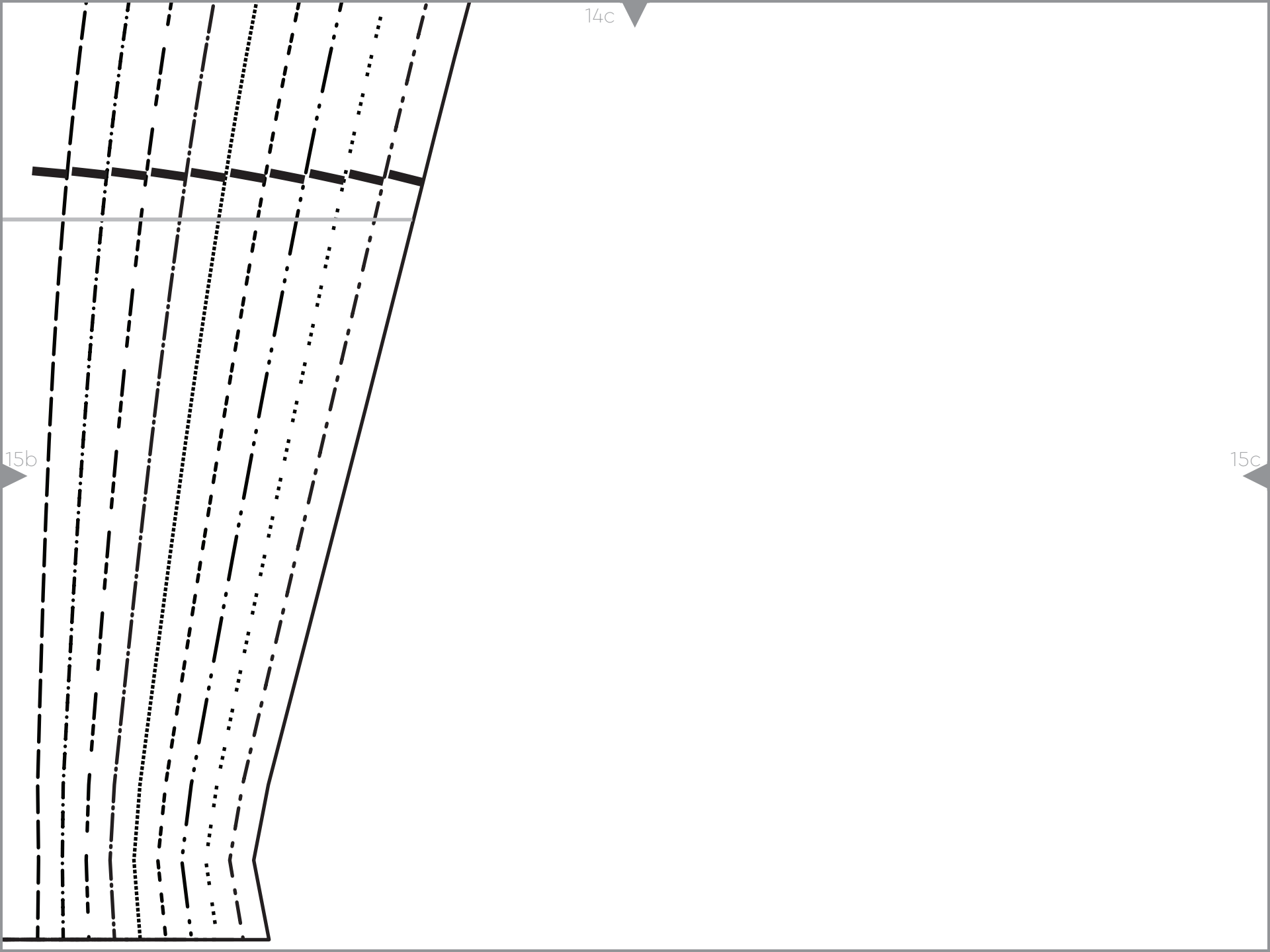
15b



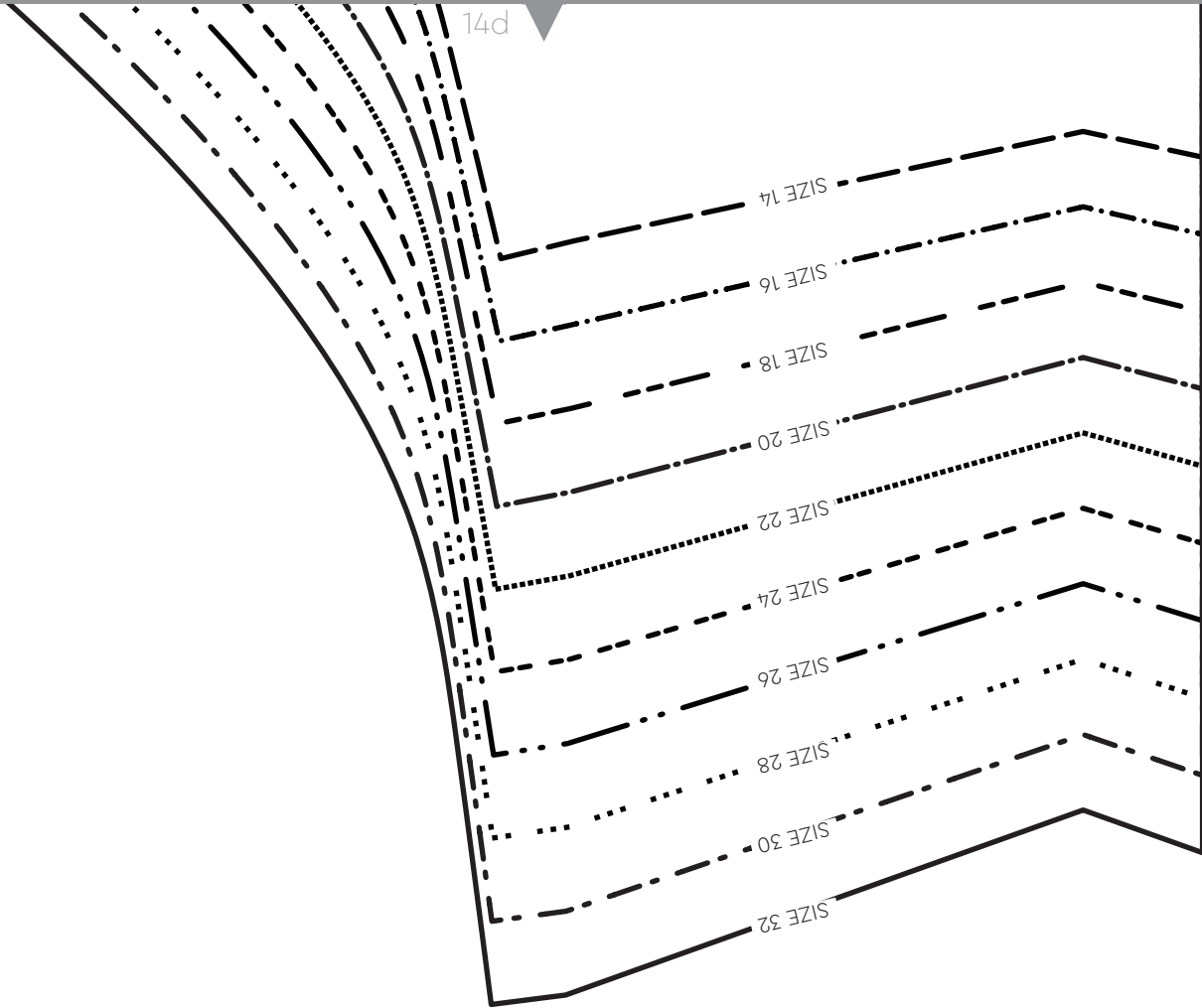
14c

15b

15c



14d



SIZE 14

SIZE 16

SIZE 18

SIZE 20

SIZE 22

SIZE 24

SIZE 26

SIZE 28

SIZE 30

SIZE 32

15c